

TOWER ASSEMBLY NUMBER	TOWER HEIGHT (FEET)	TOP SECTION	BASE SECTION			ALLOWABLE PROJECTED AREA (SQ. FT.)				BASE REACTIONS			
			PART NO.	*A-BOLTS 12 REQ'D	FACE SPREAD	TOWER TOP		30 FEET BELOW TOP		DOWN LOAD (LBS)	UPLIFT (LBS)	TOTAL SHEAR (LBS)	OTM (FT-LBS)
						ROUNDS	FLATS	ROUNDS	FLATS				
SS040D70	40	2W	3WN	SB3	1'-10	16.7	10	20	12	14,300	13,500	970	22,000
SS050D70	50	1WB	3WN	SB3	1'-10	15	9	18.3	11	19,200	18,400	970	29,700
SS060D70	60	2W	4N	SB4	2'-2	15	9	18.3	11	23,000	21,900	1,100	42,100
SS070D70	70	1WB	4N	SB4	2'-2	13.3	8	16.7	10	27,300	26,100	1,130	50,000
SS080D70	80	2W	5N	SB5	2'-6	13	8	16.7	10	31,600	30,100	1,320	66,500
SS090D70	90	1WB	5N	SB5	2'-6	11.7	7	15	9	35,200	33,600	1,330	74,200
SS100D70	100	2W	6N62	5/8X42	4'-6 1/4	11.7	7	15	9	26,000	24,100	1,850	97,900
SS110D70	110	1WB	6N62	5/8X42	4'-6 1/4	10	6	14.2	8.5	28,200	26,200	1,870	106,300
SS120D70	120	2W	7N165	5/8X42	6'-6 3/4	10	6	14.2	8.5	26,300	24,000	2,510	141,700
SS130D70	130	1WB	7N165	5/8X42	6'-6 3/4	9.2	5.5	13.3	8	28,300	25,900	2,540	152,600
SS140D70	140	2W	8N106	5/8X42	8'-6 3/4	9.2	5.5	13.3	8	29,200	26,300	3,310	204,100
SS150D70	150	1WB	8N106	5/8X42	8'-6 3/4	8.3	5	12.5	7.5	30,800	27,800	3,340	215,300
SS160D70	160	2W	9N325	5/8X42	10'-6 3/4	8.3	5	12.5	7.5	33,300	29,900	4,230	286,400
SS170D70	170	1WB	9N325	5/8X42	10'-6 3/4	7.5	4.5	12.5	7.5	34,900	31,500	4,280	301,000
SS180D70	180	2W	10N387	3/4X48	12'-7 1/4	7.5	4.5	12.5	7.5	38,500	34,500	5,350	395,700
SS190D70	190	1WB	10N387	3/4X48	12'-7 1/4	6.7	4	11.7	7	39,700	35,600	5,380	407,700

* ANCHOR BOLTS OR BASE PART NO.

GENERAL NOTES:

1. TOWER DESIGNS ARE IN ACCORDANCE WITH APPROVED NATIONAL STANDARD ANSI/EIA-222-F-1996 (NO ICE).
2. EQUIVALENT FLAT-PLATE ANTENNA AREAS BASED ON EIA RS-222-C, MUST NOT EXCEED THE AREAS SHOWN FOR FLAT MEMBER ANTENNAS.
3. TOWER DESIGNS ASSUME ALLOWABLE PROJECTED AREAS ARE SYMMETRICALLY PLACED ON THE TOWER
4. DESIGNS ASSUME ONE 7/8 LINE TO TOP AND TWO 7/8 LINES TO 30 FEET BELOW TOP, ONE PER FACE.
5. DO NOT INSTALL OR DISMANTLE TOWER WITHIN FALLING DISTANCE OF ELECTRICAL AND /OR TELEPHONE LINES.
6. TOWER ERECTION AND DISMANTLING MUST BE DONE BY QUALIFIED AND EXPERIENCED PERSONNEL
7. INSTALL WARNING PLATE (P/N ACWS IN A HIGHLY VISIBLE LOCATION.
8. ALL ANTENNA INSTALLATIONS MUST BE GROUNDED IN ACCORDANCE WITH LOCAL AND NATIONAL CODES.
9. FOR ADDITIONAL BRACING , GROUTING AND DRAINAGE DETAILS SEE DRAWING SK720305.
10. FOR TAPERED TOP DETAILS SEE DRAWING SK670407.
11. ALL TOWERS ARE PROVIDED WITH A (P/N ITT) TAPERED TOP.
12. FOR STEP BOLT DETAILS, SEE DRAWING B651264.
13. FOR FOUNDATION DETAILS, SEE DRAWING D870480 & B841300.
14. FOR ANCHOR & SHORT BASE INSTALLATION, SEE DRAWING B050439 & CU730104.

FILE NO.	Standard-SSV			
REVISIONS				
REV.	DESCRIPTION	DWN	CHK	APP
2	REDRAWN INTO AUTOCAD FORMAT DATE: Jan/09/2007	KB2	M.F	HA
3	REVISED TOP SECTION NAMES DATE: Aug/23/2007	J.K	JDM	HA
4	REVISED FROM REV 'E' TO REV 'F' DATE: Oct/27/2008	LGC	JDM	HA

DWG REFERENCE	



6718 WEST PLANK ROAD
PEORIA, IL 61604
TOLL FREE 800-727-ROHN

THIS DRAWING IS THE PROPERTY OF ROHN. IT IS NOT TO BE REPRODUCED, COPIED OR TRACED IN WHOLE OR IN PART WITHOUT OUR WRITTEN CONSENT.

ERECTION PROFILE
40'-190' 70MPH WIND REV F (NO ICE)

DWN: WDU CHK'D: GPW DATE: Sep/02/1987

ENGR: RWM

DRAWING NO: C870698 REV: 4

Oct/29/2008 10:19:39 AM

Erection

FOUNDATION AND ANCHOR TOLERANCES
ALL FOUNDATIONS

1. CONCRETE DIMENSIONS - PLUS OR MINUS 1" (25mm).
2. DEPTH OF FOUNDATION - PLUS 3" (76mm) OR MINUS 0".
3. DRILLED FOUNDATIONS OUT OF PLUMB - 1.0 DEGREE.
4. REINFORCING STEEL PLACEMENT - PER A.C.I. 301.
5. PROJECTION OF EMBEDMENTS - PLUS OR MINUS 1/8" (3mm).
6. VERTICAL EMBEDMENTS OUT OF PLUMB - 0.5 DEGREE.

ANCHOR BOLTS

7. MAXIMUM DISTANCE FROM CENTERLINE OF ANCHOR BOLTS TO CENTERLINE OF FOUNDATION - 1/24 OF PIER DIAMETER UP TO A MAXIMUM OF 2" (51mm).
8. ANCHOR BOLT SPACING - 1/16" (2mm).
9. ANCHOR BOLT CIRCLE ORIENTATION - 0.25 DEGREE.
10. ANCHOR BOLT CIRCLE DIAMETER - PLUS OR MINUS 1/16" (2mm).

SELF-SUPPORTING TOWERS

11. FACE SPREAD DIMENSION CENTER TO CENTER OF ANCHOR BOLT CIRCLES - PLUS OR MINUS 1/16" (2mm) OR 1/16" (2mm) PER 20 FT. (6m) OF FACE SPREAD.
12. MAXIMUM DIFFERENCE BETWEEN ANY TWO FOUNDATION ELEVATIONS - 1/2" (13mm).


GUYED TOWERS

13. GUY RADIUS - PLUS OR MINUS 5% OF DISTANCE SPECIFIED.
14. ANCHOR ELEVATION - PLUS OR MINUS 5% OF GUY RADIUS.
15. ANCHOR ALIGNMENT (PERPENDICULAR TO GUY RADIUS) - 1.0 DEGREE.
16. ANCHOR ROD SLOPE - PLUS OR MINUS 1.0 DEGREE.
17. ANCHOR ROD ALIGNMENT WITH GUY RADIUS PLUS OR MINUS 1.0 DEGREE.
18. ANCHOR HEAD OUT OF PLUMB - 1.0 DEGREE.
19. GUY INITIAL TENSION - PLUS OR MINUS 10% OF TENSION SPECIFIED.

NOTE: TOLERANCES IN NOTES 13 AND 14 CAN NOT OCCUR SIMULTANEOUSLY

WARNING!!!

AFTER ANCHOR BOLTS ARE INSTALLED IN CONCRETE HAS TAKEN ITS INITIAL SET, ANCHOR BOLTS MUST NOT BE MOVED, BENT OR REALIGNED IN ANY MANNER. A NUT LOCKING DEVICE MUST BE INSTALLED ON ALL ANCHOR BOLTS.


FILE NO. Standard-SSV				
REVISIONS				
REV.	DESCRIPTION	DWN	CHK	APP
8	REDRAWN TO AUTOCAD	JDA	JDM	H.A
DATE: Jul/17/2006				
DWG REFERENCE				
 6718 WEST PLANK ROAD PEORIA, IL 61604 TOLL FREE 800-727-ROHN				
THIS DRAWING IS THE PROPERTY OF ROHN. IT IS NOT TO BE REPRODUCED, COPIED OR TRACED IN WHOLE OR IN PART WITHOUT OUR WRITTEN CONSENT.				
FOUNDATION & ANCHOR TOLERANCE				
DWN:	CSR	CHK'D:	KTL	DATE:
ENGR:	XK			Sep/25/1987
DRAWING NO:				REV:
A810214				8

Jan/14/2008 3:23:22 PM

Irection\

STANDARD FOUNDATION NOTES

1. FOUNDATION DESIGNS ARE IN ACCORDANCE WITH ANSI/TIA/EIA/-222-F, "STRUCTURAL STANDARDS FOR STEEL ANTENNA TOWERS AND ANTENNA SUPPORTING STRUCTURES", SECTION 7, FOR "NORMAL" SOIL CONDITIONS. "NORMAL" SOIL IS DEFINED AS DRY, COHESIVE SOIL WITH AN ALLOWABLE NET VERTICAL BEARING CAPACITY OF 4000 PSF (192 kPa) AND AN ALLOWABLE NET HORIZONTAL PRESSURE OF 400 PSF PER LINEAL FOOT OF DEPTH (62.8 kPa PER LINEAL METER OF DEPTH) TO A MAXIMUM OF 4000 PSF (192 kPa).
2. THE PURCHASER MUST VERIFY THAT ACTUAL SITE SOIL PARAMETERS MEET OR EXCEED E.I.A. "NORMAL" SOIL PARAMETERS AND THAT THE DEPTH OF STANDARD FOUNDATIONS ARE ADEQUATE BASED ON THE FROST PENETRATION AND/OR ZONE OF SEASONAL MOISTURE VARIATION AT THE SITE. FOUNDATION DESIGN MODIFICATIONS MAY BE REQUIRED IN THE EVENT "NORMAL" SOIL PARAMETERS ARE NOT APPLICABLE FOR THE ACTUAL SUBSURFACE CONDITIONS ENCOUNTERED.
3. FOUNDATION DESIGNS ASSUME FIELD INSPECTIONS WILL BE PERFORMED BY THE PURCHASER'S REPRESENTATIVE TO VERIFY THAT CONSTRUCTION MATERIALS, INSTALLATION METHODS AND ASSUMED DESIGN PARAMETERS ARE ACCEPTABLE BASED ON THE CONDITIONS EXISTING AT THE SITE.
4. WORK SHALL BY IN ACCORDANCE WITH LOCAL CODES, SAFETY REGULATIONS AND UNLESS OTHERWISE NOTED, THE LATEST REVISION OF ACI 318, "BUILDING CODE REQUIREMENTS FOR REINFORCED CONCRETE". PROCEDURES FOR THE PROTECTION OF EXCAVATIONS, EXISTING CONSTRUCTION AND UTILITIES SHALL BE ESTABLISHED PRIOR TO FOUNDATION INSTALLATION.
5. ANCHOR BOLTS SHALL MEET OF EXCEED THE REQUIREMENTS OF ASTM F1554-S2, S5 GRADE 105 AND SHALL BE TIGHTENED TO A SNUG TIGHT CONDITION (FULL EFFORT OF A MAN USING AN ORDINARY SPUD WRENCH).
6. NUT LOCKING DEVICE SHALL BE INSTALLED ON ALL ANCHOR BOLTS.
7. CONCRETE MATERIALS SHALL CONFORM TO THE APPROPRIATE STATE REQUIREMENTS FOR EXPOSED STRUCTURAL CONCRETE.
8. PROPORTIONS OF CONCRETE MATERIALS SHALL BE SUITABLE FOR THE INSTALLATION METHOD UTILIZED AND SHALL RESULT IN DURABLE CONCRETE FOR RESISTANCE TO LOCAL ANTICIPATED AGGRESSIVE ACTIONS. THE DURABILITY REQUIREMENT OF ACI 318 CHAPTER 4 SHALL BE SATISFIED BASED ON THE CONDITIONS EXPECTED AT THE SITE. AS A MINIMUM, CONCRETE SHALL DEVELOP MINIMUM COMPRESSIVE STRENGTH OF 3000 PSI (20.7 MPa) IN 28 DAYS.
9. MAXIMUM SIZE OF AGGREGATE SHALL NOT EXCEED SIZE SUITABLE FOR INSTALLATION METHOD UTILIZED OR 1/3 CLEAR DISTANCE BEHIND OR BETWEEN REINFORCING. MAXIMUM SIZE MAY BE INCREASED TO 2/3 CLEAR DISTANCE PROVIDED WORKABILITY AND METHODS OF CONSOLIDATION SUCH AS VIBRATING WILL PREVENT HONEYCOMBS OR VOIDS.
10. REINFORCEMENT SHALL BE DEFORMED AND CONFORM TO THE REQUIREMENTS OF ASTM A615 GRADE 60 UNLESS OTHERWISE NOTED. SPLICES IN REINFORCEMENT SHALL NOT BE ALLOWED UNLESS OTHERWISE INDICATED.
11. REINFORCING CAGES SHALL BE BRACED TO RETAIN PROPER DIMENSIONS DURING HANDLING AND THROUGHOUT PLACEMENT OF CONCRETE.
12. WELDING IS PROHIBITED ON REINFORCING STEEL AND EMBEDMENTS.
13. MINIMUM CONCRETE COVER FOR REINFORCEMENT SHALL BE 3 INCHES (76 mm) UNLESS OTHERWISE NOTED. APPROVED SPACERS SHALL BE USED TO INSURE A 3 INCH (76 mm) MINIMUM COVER ON REINFORCEMENT.
14. CONCRETE COVER FROM TOP OF FOUNDATION TO ENDS OF VERTICAL REINFORCEMENT SHALL NOT EXCEED 3 INCHES (76 mm) NOR BE LESS THAN 2 INCHES (51 mm).
15. SPACERS SHALL BE ATTACHED INTERMITTENTLY THROUGHOUT THE ENTIRE LENGTH OF VERTICAL REINFORCING CAGES TO INSURE CONCENTRIC PLACEMENT OF CAGES IN EXCAVATIONS.
16. FOUNDATION DESIGNS ASSUME STRUCTURAL BACKFILL TO BE COMPACTED IN 8 INCH (200 mm) MAXIMUM LAYERS TO 95% OF MAXIMUM DRY DENSITY AT OPTIMUM MOISTURE CONTENT IN ACCORDANCE WITH ASTM D698. ADDITIONALLY, STRUCTURAL BACKFILL MUST HAVE A MINIMUM COMPACTED UNIT WEIGHT OF 100 POUNDS PER CUBIC FOOT (16 kN/m3).
17. FOUNDATION DESIGNS ASSUME LEVEL GRADE AT THE SITE.
18. FOUNDATION INSTALLATION SHALL BE SUPERVISED BY PERSONNEL KNOWLEDGEABLE AND EXPERIENCED WITH THE PROPOSED FOUNDATION TYPE. CONSTRUCTION SHALL BE IN ACCORDANCE WITH GENERALLY ACCEPTED INSTALLATION PRACTICES.
19. FOR FOUNDATION AND ANCHOR TOLERANCES SEE STRUCTURE ASSEMBLY DRAWING.
20. LOOSE MATERIAL SHALL BE REMOVED FROM BOTTOM OF EXCAVATION PRIOR TO CONCRETE PLACEMENT. SIDES OF EXCAVATION SHALL BE ROUGH AND FREE OF LOOSE CUTTINGS.
21. CONCRETE SHALL BE PLACED IN A MANNER THAT WILL PREVENT SEGREGATION OF CONCRETE MATERIALS AND OTHER OCCURRENCES WHICH MAY DECREASE THE STRENGTH OR DURABILITY OF THE FOUNDATION.
22. FREE FALL CONCRETE MAY BE USED PROVIDED FALL IS VERTICAL DOWN WITHOUT HITTING SIDES OF EXCAVATION, FORMWORK, REINFORCING BARS, FORM TIES, CAGE BRACING OR OTHER OBSTRUCTIONS. UNDER NO CIRCUMSTANCES SHALL CONCRETE FALL THROUGH WATER.
23. CONCRETE SHALL BE PLACED AGAINST UNDISTURBED SOIL EXCEPT FOR PIERS OF PIER AND PAD FOUNDATIONS. FORMS FOR PIERS SHALL BE REMOVED PRIOR TO PLACING STRUCTURAL BACKFILL.
24. CONSTRUCTION JOINTS, IF REQUIRED IN PIER MUST BE AT LEAST 12 INCHES (305 mm) BELOW BOTTOM OF EMBEDMENTS AND MUST BE INTENTIONALLY ROUGHENED TO A FULL AMPLITUDE OF 1/4 INCH (6 mm). FOUNDATION DESIGN ASSUMES TO OTHER CONSTRUCTION JOINTS.
25. TOP OF FOUNDATION OUTSIDE LIMITS OF ANCHOR BOLTS SHALL BE SLOPED TO DRAIN WITH A FLOATED FINISHED. AREA INSIDE LIMITS OF ANCHOR BOLTS SHALL BE LEVEL WITH A SCRATCHED FINISH.
26. EXPOSED EDGES OF CONCRETE SHALL BE CHAMFERED 3/4" X 3/4" (19 mm X 19 mm) MINIMUM.
27. FOR ANCHOR BLOCK TYPE FOUNDATIONS, FOR GUYED TOWERS, THE PORTION OF ALL STEEL ANCHORS, FROM TOP OF ANCHOR BLOCK TO GROUND LEVEL, SHALL BE COATED WITH BITUMEN. DESIGN ASSUMES PERIODIC INSPECTIONS WILL BE PERFORMED OVER THE LIFE OF THE STRUCTURE TO DETERMINE IF ADDITIONAL ANCHOR CORROSION PROTECTION MEASURES MUST BE IMPLEMENTED BASED ON OBSERVED SITE-SPECIFIC CONDITIONS.

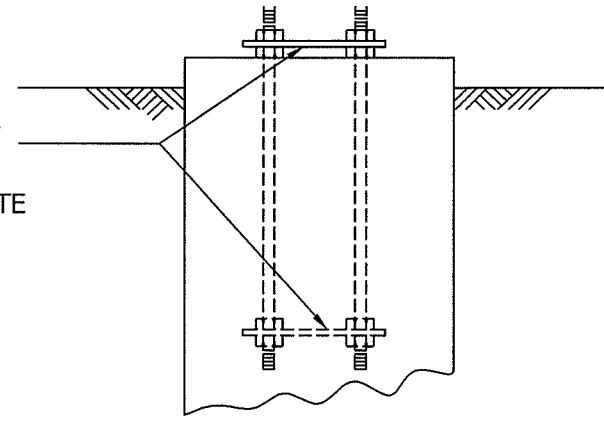
FILE NO. Standard-SSV				
REVISIONS				
REV.	DESCRIPTION	DWN	CHK	APP
11	REDRAWN IN AUTOCAD DATE: Apr/04/2006	M.F	JDM	H.A
12	REVISED NOTE #27: ADDED "FOR GUYED TOWERS" DATE: Sep/09/2008	JWS	JDM	HA
DWG REFERENCE				
 6718 WEST PLANK ROAD PEORIA, IL 61604 TOLL FREE 800-727-ROHN				
THIS DRAWING IS THE PROPERTY OF ROHN. IT IS NOT TO BE REPRODUCED, COPIED OR TRACED IN WHOLE OR IN PART WITHOUT OUR WRITTEN CONSENT.				
FOUNDATION MATERIAL INSTALLATION NOTES				
DWN:	CSR	CHK'D:	H.A	DATE: Jun/17/1984
ENG'R:	XK			
DRAWING NO:	B841300			REV: 12

Jun/23/2010 11:19:53 AM

I:\erection\

ANCHOR BOLT TEMPLATE INFORMATION					
ASSEMBLY	TEMPLATE	PT. NO	ANCHOR BOLTS	BASE FLANGE	TOWER BASE SECTION
PART NO.	TOP	BOTTOM	(12 REQ'D)	SIZE	(SEE TOWER ASSY.FOR EXACT P/N)
6NABDST	(3)VL25T	(3)VL25B	5/8 X 42"	5 X 5 X 3/4"	6N , 7N , 8N , 9N , 9NH
10NABDST	(3)VL26T	(3)VL26B	3/4 X 48"	6 X 6 X 3/4"	10N , 10NH
11NABDST1	(3)VL27T	(3)VL27B	7/8 X 42"	7 X 7 X 1"	11N , 12N , 12NH , 13N , 13NH
11NABDST			7/8 X 60"		
15NHABDST1	(3)VL28T	(3)VL28B	1 X 70"	9 1/2 X 9 1/2 X 1 1/4"	14N , 14NH , 15N , 15NH , 16N , 16NH
15NHABDST			1 X 78"		

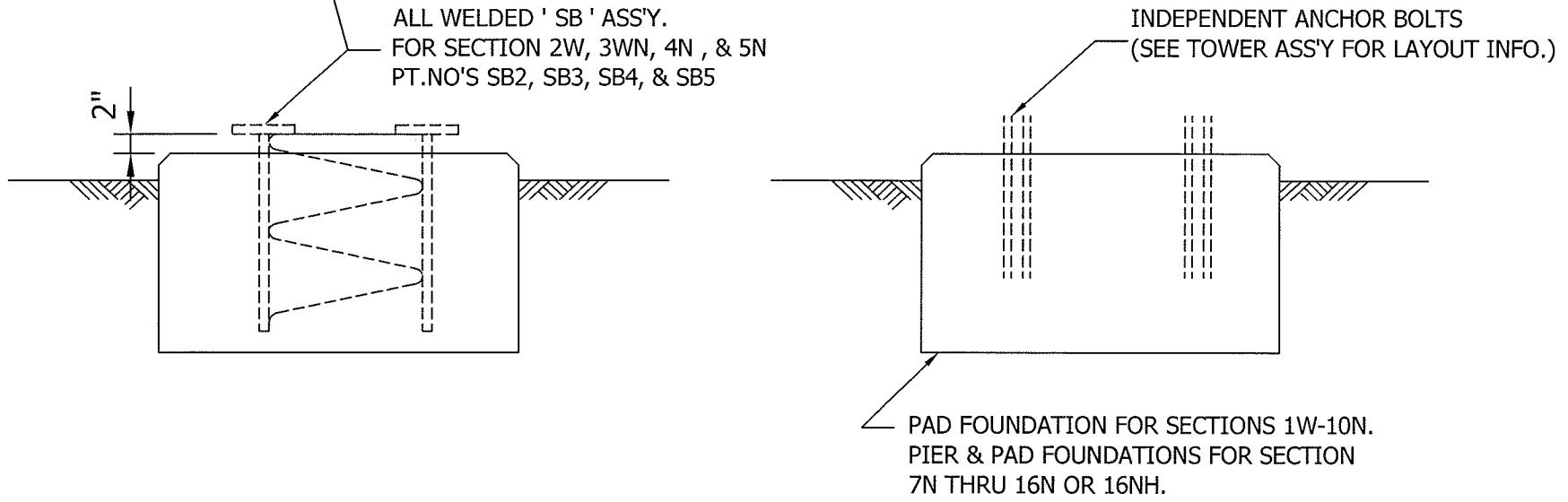
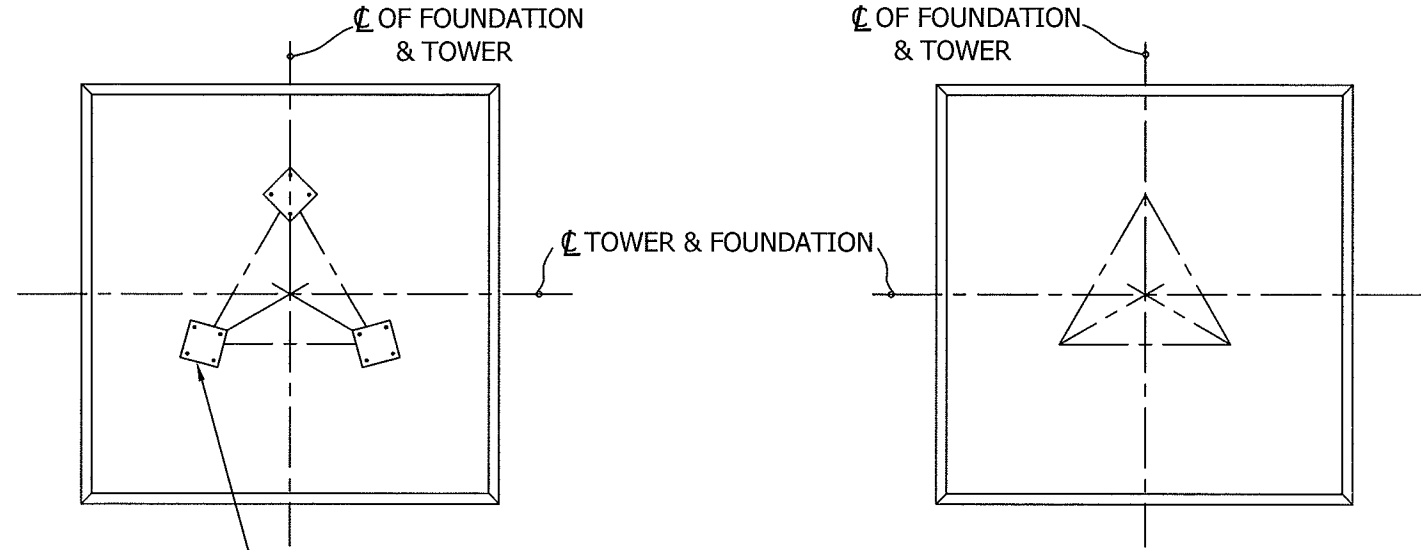
ANCHOR BOLT SETTING TEMPLATES (SEE CHART FOR PART NO.REQ'D.) REMOVE UPPER TEMPLATE BEFORE INSTALLING TOWER.



FILE NO. Standard-SSV				
REVISIONS				
REV.	DESCRIPTION	DWN	CHK	APP
4	UPDATED AND REDRAWN DATE: Nov/07/2005	KB3	KTL	H.A
5	REVISED NOTES & TEMPLATE INFO DATE: Jan/09/2006	JWS	KTL	HA

DWG REFERENCE	

- NOTES:
1. IT IS THE RESPONSIBILITY OF THE FOUNDATION CONTRACTOR TO VERIFY THAT THE CORRECT SETTING TEMPLATE & FOUNDATION DWG.ARE BEING USED.
 2. CHECK NUMBER & SIZE OF ANCHOR BOLTS, SPACING, & BOLT CIRCLE DIA. ON TEMPLATE AGAINST ANCHOR BOLT LAYOUT DRAWING BEFORE INSTALLATION.
 3. BOLT TEMPLATES ARE AVAILABLE FOR SECTIONS 6N THRU 16N OR 16NH.
 4. ALLOW FOR DRAINAGE OF ALL PIPE LEG TOWER SECTION.
 5. PART NO. IN CHART AT UPPER LEFT CONSISTS OF 12 ANCHOR BOLTS & 6 TEMPLATES.



NOTE: SEE DWG. NO.B740973 FOR TEMPLATE FABRICATION DETAILS.
NOTE: SEE DWG. NO. B050439 FOR TEMPLATE DETAILS.

ROHN
PRODUCTS
6718 WEST PLANK ROAD
PEORIA, IL 61604
TOLL FREE 800-727-ROHN

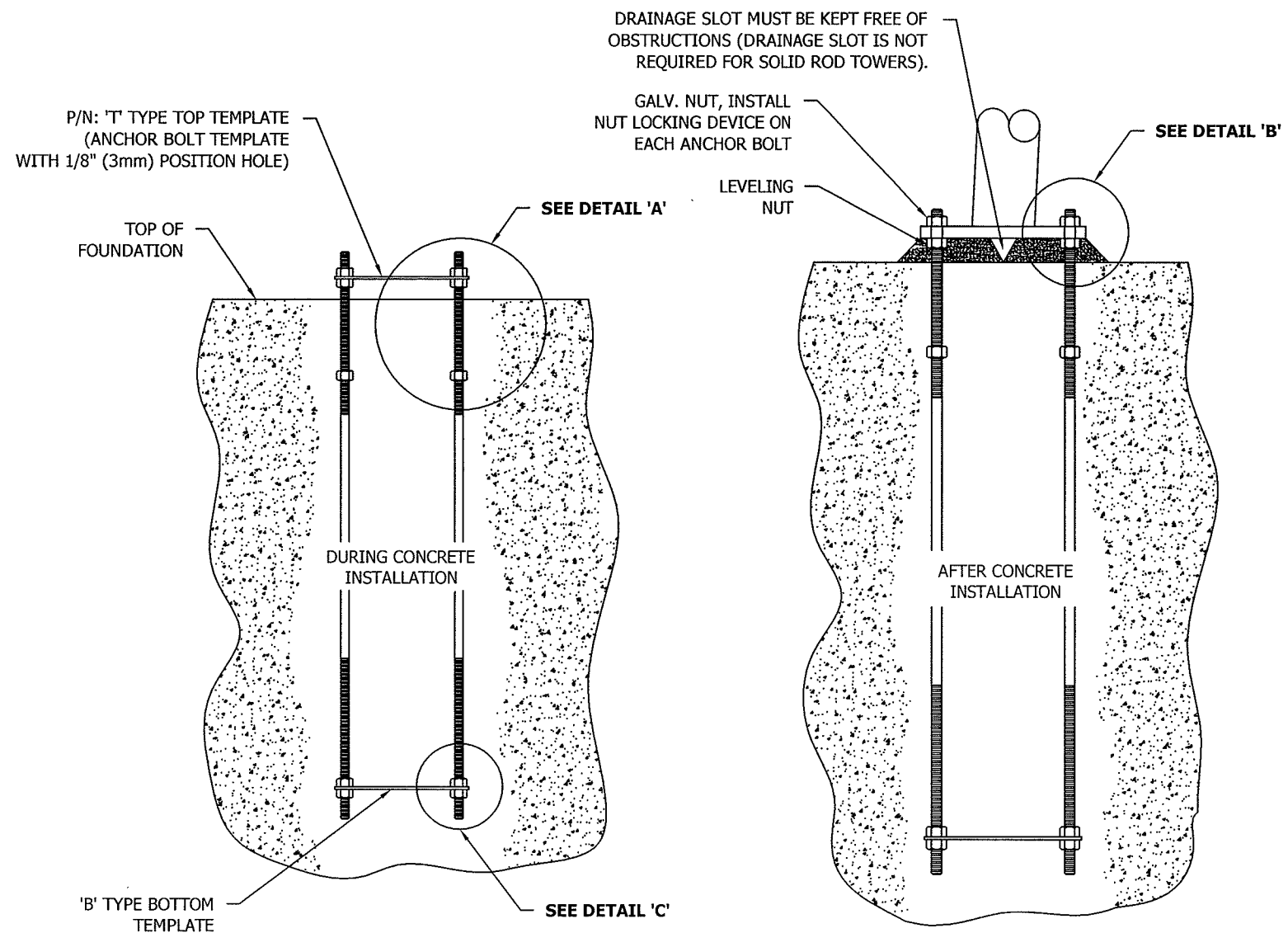
THIS DRAWING IS THE PROPERTY OF ROHN. IT IS NOT TO BE REPRODUCED, COPIED OR TRACED IN WHOLE OR IN PART WITHOUT OUR WRITTEN CONSENT.

ANCHOR BOLT LAYOUT
TEMPLATE INFO & SHORT BASE DETAILS

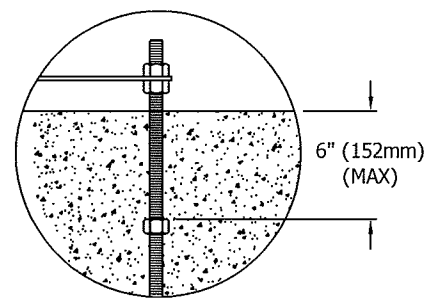
DWN:	OH	CHK'D:	WDU	DATE:	Feb/14/1975	
ENG'R:	CW					
DRAWING NO:	CU730104				REV:	5

Mar/01/2007 3:16:37 PM

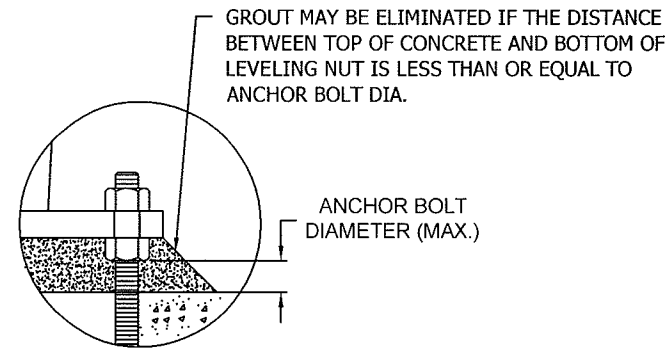
Erection



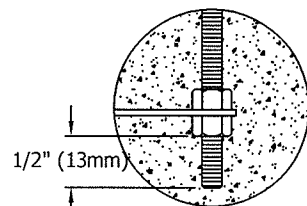
ELEVATION VIEWS



DETAIL 'A'



DETAIL 'B'



DETAIL 'C'

ANCHOR BOLT INSTALLATION TOLERANCES

1. FACE SPREAD DIMENSION CENTER-TO-CENTER OF ANCHOR BOLT CIRCLES - PLUS OR MINUS 1/16" (2mm) OR 1/16"(2mm) PER 20 FT. (6m) OF FACE SPREAD.
2. MAXIMUM DIFFERENCE BETWEEN ANY TWO FOUNDATION ELEVATIONS - 1/2" (13mm).
3. CONCRETE DIMENSIONS - PLUS OR MINUS 1" (25mm).
4. DEPTH OF FOUNDATION - PLUS 3" (76mm) OR MINUS 0".
5. DRILLED FOUNDATIONS OUT OF PLUMB - 1.0 DEGREE.
6. REINFORCING STEEL PLACEMENT - PER A.C.I. 301.
7. PROJECTION OF EMBEDMENTS - PLUS OR MINUS 1/8" (3mm).
8. VERTICAL EMBEDMENTS OUT OF PLUMB -1/2 DEGREE.
9. MAXIMUM DISTANCE FROM CENTERLINE OF ANCHOR BOLTS TO CENTERLINE OF FOUNDATION - 1/24 OF PIER DIAMETER UP TO A MAXIMUM OF 2" (50mm).
10. ANCHOR BOLT SPACING - 1/16" (2mm).
11. ANCHOR BOLT CIRCLE ORIENTATION - 1/4 DEGREE.
12. ANCHOR BOLT CIRCLE DIAMETER - PLUS OR MINUS 1/16" (2mm).

!!! WARNING !!!

- ENSURE DIMENSION 'D' IS CORRECT ON ALL FACES PRIOR TO PLACING CONCRETE AND THAT THE NUMBER AND SIZE OF ANCHOR BOLTS MATCHES THE STRUCTURE DRAWING.
- AFTER ANCHOR BOLTS ARE INSTALLED AND CONCRETE HAS TAKEN ITS INITIAL SET, ANCHOR BOLTS MUST NOT BE MOVED, BENT OR REALIGNED IN ANY MANNER. A NUT LOCKING DEVICE MUST BE INSTALLED ON ALL ANCHOR BOLTS.

!! WARNING !!
PRIOR TO PLACING CONCRETE:

- CHECK THAT THE TEMPLATE ANCHOR BOLT CIRCLE MATCHES THE ANCHOR BOLT CIRCLE SHOWN ON THE STRUCTURE DRAWING.
- CALL ROHN (309)-566-3000 FOR ANY DISCREPANCY.

NOTES

1. ALL ANCHOR BOLTS MUST MEET OR EXCEED REQUIREMENTS OF A.S.T.M. F1554-S2, S5 GRADE 105.
2. GROUT TO BE 5000 PSI MIN. ULTIMATE STRENGTH/7 DAY NON-SHRINKING AND NON-METALLIC.
3. SPECIAL CARE MUST BE TAKEN WHEN LIFTING ANCHOR BOLT CLUSTER, IN ORDER TO PREVENT ANCHOR BOLT TEMPLATE DISTORTION.
4. ANCHOR BOLT ASSEMBLY MUST BE ADEQUATELY SUPPORTED AND RESTRAINED TO PREVENT MOVEMENT OF THE CLUSTER DURING CONCRETE INSTALLATION.
5. IT IS THE RESPONSIBILITY OF THE FOUNDATION CONTRACTOR TO VERIFY THAT THE CORRECT ANCHOR BOLT TEMPLATE AND FOUNDATION SHOWN ON RESPECTIVE SITE DRAWINGS ARE BEING USED.
6. IT IS THE RESPONSIBILITY OF THE FOUNDATION DESIGN ENGINEER TO INSURE THAT THE ANCHORAGES PROVIDED ARE COMPATIBLE WITH THE PROPOSED FOUNDATION DESIGNS AND THAT THE CAPACITIES OF THE ANCHORAGES ARE NOT LIMITED BY THE STRENGTH OF THE FOUNDATIONS.

FILE NO.				
REVISIONS				
REV.	DESCRIPTION	DWN	CHK	APP
2	UPDATE TO NEW STANDARDS	JEC	KTL	DWG
DATE: 11/29/11				



PO BOX 5999
 PEORIA, IL 61601-5999
 TOLL FREE 800-727-ROHN

THIS DRAWING IS THE PROPERTY OF ROHN. IT IS NOT TO BE REPRODUCED, COPIED OR TRACED IN WHOLE OR IN PART WITHOUT OUR WRITTEN CONSENT.

ANCHOR BOLTS LAYOUT FOR 5/8", 3/4", 7/8", & 1" ANCHOR BOLTS

DWN:	MF	CHK'D:	KTL	DATE:	09/07/05
ENG'R:	HA	SHEET #:	1 OF 1		
DRAWING NO:	B050439			REV:	2

FILE NO.

REVISIONS

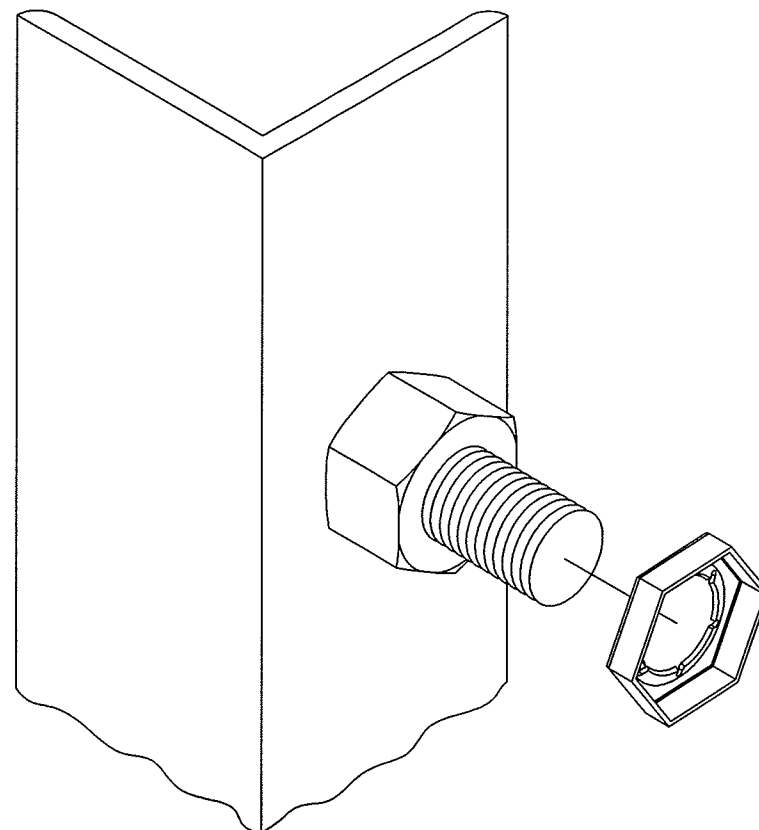
REV.	DESCRIPTION	DWN	CHK	APP
7	CHANGE NOTATION. DATE: 01/11/12	JEC	JDM	HA

ASSEMBLY BOLT INSTALLATION

1. UNLESS OTHERWISE SPECIFIED, ASSEMBLY BOLTS AND ANCHOR BOLTS ARE TO BE TIGHTENED TO A SNUG TIGHT CONDITION (MEMBERS IN FIRM CONTACT) AND MUST INCLUDE A NUT LOCKING DEVICE. NO MINIMUM BOLT TENSION OR TORQUE VALUES ARE REQUIRED. WHEN LOCK WASHERS ARE PROVIDED AS A NUT LOCKING DEVICE, REPLACE ANY DAMAGED WASHERS DUE TO OVER TIGHTENING.
2. WASHERS ARE TO BE INSTALLED OVER SLOTTED HOLES.

PAL NUT INSTALLATION

1. PAL NUTS ARE TO BE INSTALLED AFTER NUTS ARE TIGHT AND WITH EDGE LIP OUT (SEE PICTURE). PAL NUTS ARE NOT REQUIRED WHEN SELF-LOCKING NUTS OR LOCK WASHERS ARE PROVIDED.



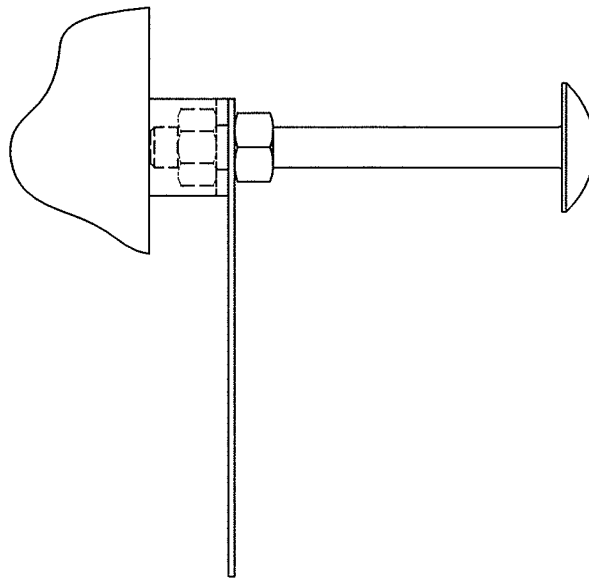
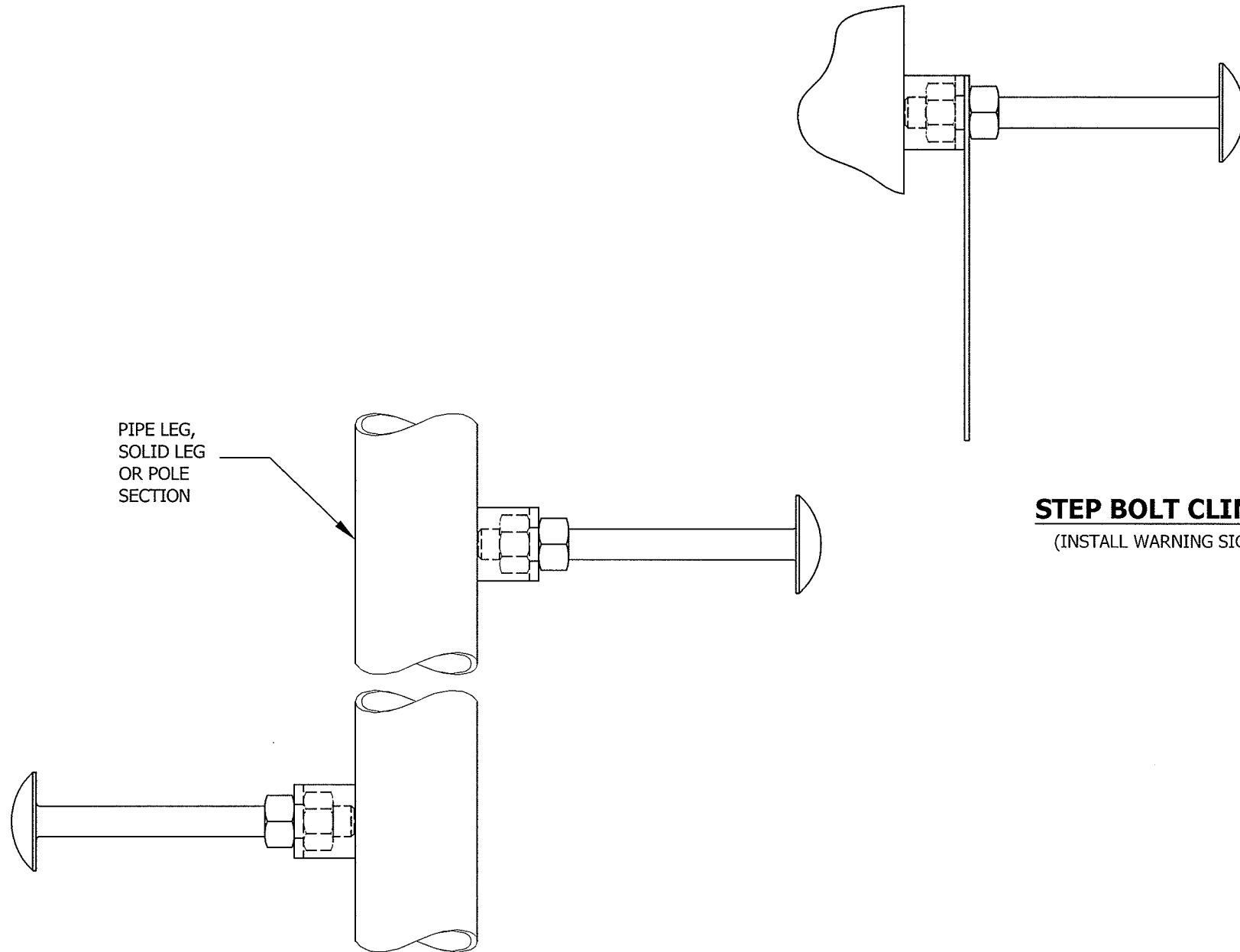
PO BOX 5999
PEORIA, IL 61601-5999
TOLL FREE 800-727-ROHN

THIS DRAWING IS THE PROPERTY OF ROHN. IT IS NOT TO BE REPRODUCED, COPIED OR TRACED IN WHOLE OR IN PART WITHOUT OUR WRITTEN CONSENT.

BOLT ASSEMBLY INSTALLATION

DWN: OH	CHK'D:	DATE: 07/05/79
ENG'R: TWS	SHEET #: 1 OF 1	
DRAWING NO: A790135	REV: 7	

Nov/15/2007 11:55:36 AM



○

STEP BOLTS TO BE CLIMBED BY A COMPETENT CLIMBER ONLY. 100% FALL PROTECTION IS REQUIRED AT ALL TIMES. CLIMBING STEP BOLTS IS DANGEROUS AND CAN CAUSE SERIOUS INJURY OR DEATH. PERFORM AN INSPECTION PRIOR TO CLIMBING TO IDENTIFY POTENTIAL CLIMBING HAZARDS.

STEP BOLTS SPACING AT SECTION JOINTS MAY NOT BE CONSISTENT WITH THE SPACING THROUGHOUT THE STRUCTURE. FLANGE PLATES AT SECTION JOINTS, GUYS, ATTACHMENTS TO LEGS, ETC. MAY BE AN OBSTRUCTION TO CONTINUOUS CLIMBING.

STEP BOLT CLIMBING WARNING SIGN

(INSTALL WARNING SIGN IN BOTTOM 5' OF STRUCTURE)

NOTE

1. STEP BOLTS MUST BE TURNED UNTIL THE FRONT EDGE OF THE BOLT TOUCHES THE SIDE OF THE STRUCTURE.
2. STEP BOLTS ARE SUPPLIED FOR CONSTRUCTION PURPOSES AND ARE NOT INTENDED FOR USE BY UNQUALIFIED PERSONNEL.
3. DEVIATION FROM PERFECT ALIGNMENT IS ACCEPTABLE. SOME SPACING INCONSISTENCY MAY EXIST AT SPLICE LOCATIONS.
4. IF STEP BOLTS ARE BELIEVED TO PRESENT SAFETY PROBLEMS TO PERSONNEL, DO NOT INSTALL THE STEP BOLTS.

FILE NO. Standard-SSV

REVISIONS				
REV.	DESCRIPTION	DWN	CHK	APP
1	DATE: Aug/21/2005			
2	DATE: Aug/21/2005			
3	UPDATED DATE: Aug/22/2005	JDM	HA	HA
4	ADDED WARNING SIGN DATE: Mar/15/2006	JDM	JWS	H.A
5	REVISED GENERAL NOTES DATE: Feb/28/2007	JDM	M.F	H.A

DWG REFERENCE



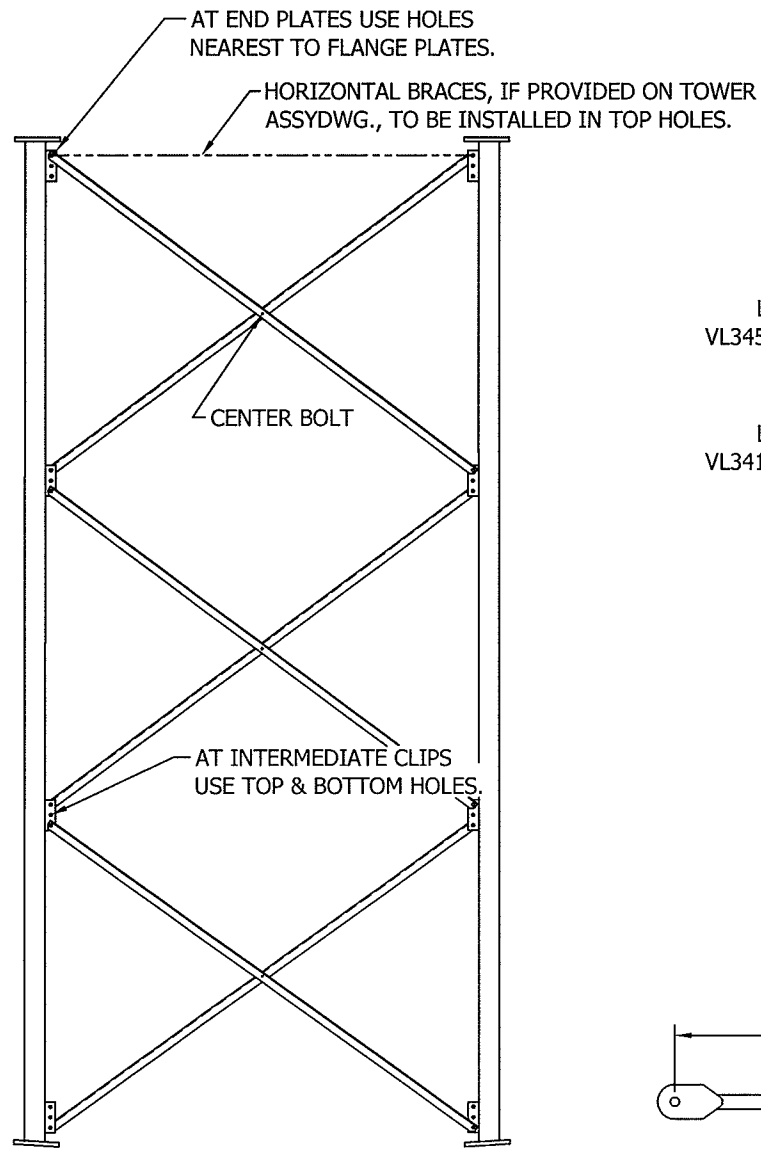
6718 WEST PLANK ROAD
PEORIA, IL 61604
TOLL FREE 800-727-ROHN

THIS DRAWING IS THE PROPERTY OF ROHN. IT IS NOT TO BE REPRODUCED, COPIED OR TRACED IN WHOLE OR IN PART WITHOUT OUR WRITTEN CONSENT.

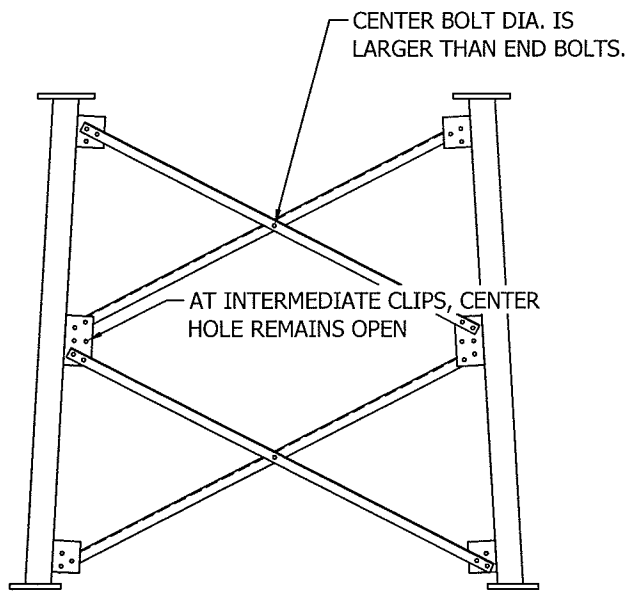
STEP BOLT INSTALLATION DETAIL

DWN: OH	CHK'D: TWS	DATE: Apr/16/1974
ENG'R: CW		
DRAWING NO: B651264		REV: 5

\\precision\

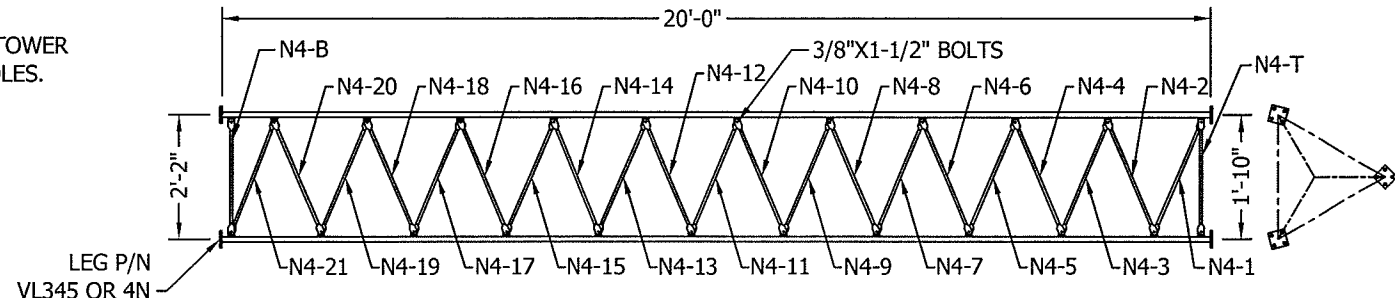


TYPICAL ONE BOLT, BRACE CONNECTION DETAIL

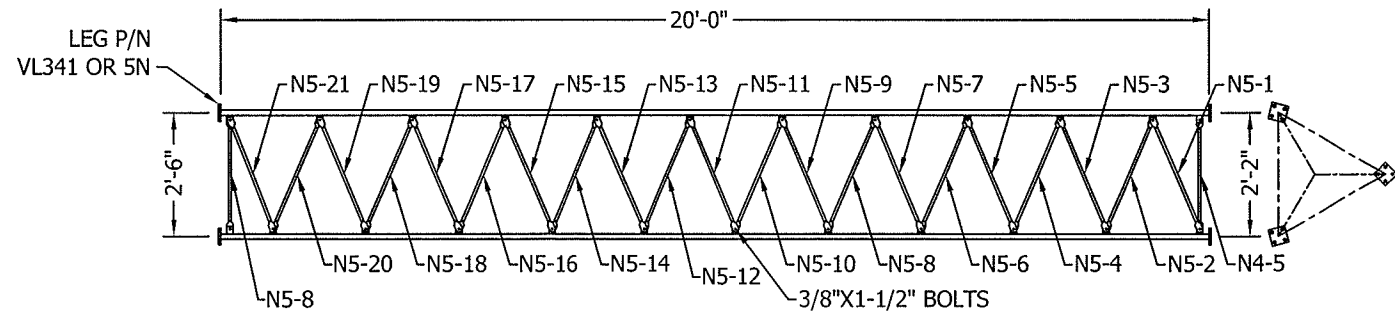


TYPICAL TWO-BOLT, BRACE CONNECTION DETAIL

NOTE: SECTIONS SHOULD BE ASSEMBLED ON EVEN GROUND & LEVELED TO INSURE STRAIGHTNESS

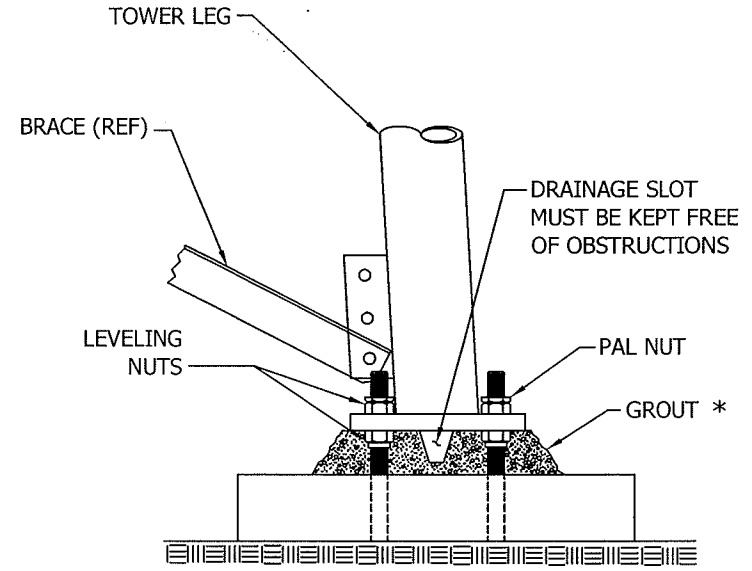
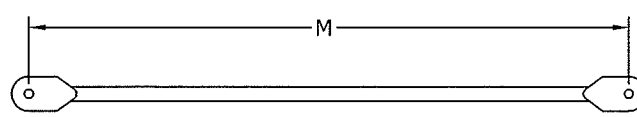


SECTION 4N



SECTION 5N

IMPORTANT: LEG P/N IS STAMPED AT BOTTOM OF BASE FLANGE PLATE OF EACH SECTION LEG.



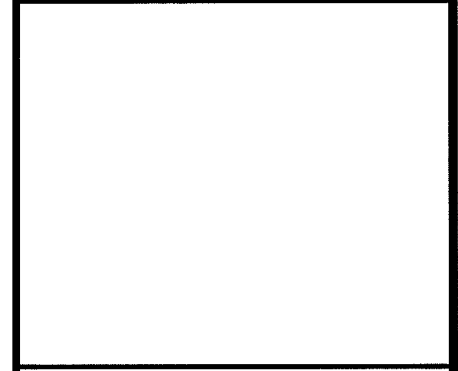
GROUTING AND DRAINAGE DETAILS

* GROUT MUST BE STRUCTURAL & MUST BE 5000 PSI (34.5 MPa) MINIMUM ULTIMATE STRENGTH NON-SHRINK & NON-METALLIC OR APPROVED EQUAL AND INSTALLED ACCORDING TO MANUFACTURER'S RECOMMENDATIONS.

SECTION 4N		SECTION 5N	
P/N	M	P/N	M
N4-1	21 3/8"	N5-1	24 3/4"
N4-2	21 15/16"	N5-2	25 1/4"
N4-3	22 1/16"	N5-3	25 7/16"
N4-4	22 1/4"	N5-4	25 5/8"
N4-5	22 3/8"	N5-5	25 3/4"
N4-6	22 9/16"	N5-6	25 15/16"
N4-7	22 3/4"	N5-7	26 1/8"
N4-8	22 7/8"	N5-8	26 1/4"
N4-9	23 1/16"	N5-9	26 7/16"
N4-10	23 3/16"	N5-10	26 5/8"
N4-11	23 3/8"	N5-11	26 3/4"
N4-12	23 9/16"	N5-12	26 15/16"
N4-13	23 11/16"	N5-13	27 1/8"
N4-14	23 7/8"	N5-14	27 5/16"
N4-15	24 1/16"	N5-15	27 7/16"
N4-16	24 3/16"	N5-16	27 5/8"
N4-17	24 3/8"	N5-17	27 13/16"
N4-18	24 9/16"	N5-18	28"
N4-19	24 11/16"	N5-19	28 1/8"
N4-20	24 7/8"	N5-20	28 5/16"
N4-21	25 1/16"	N5-21	28 1/2"
N4-T	18 9/16"		
N4-B	22 1/2"		

FILE NO.	Standard-SSV			
REVISIONS				
REV.	DESCRIPTION	DWN	CHK	APP
8	VL341 WAS VL346	M.F	JDM	H.A
DATE: Mar/21/2006				

DWG REFERENCE	



THIS DRAWING IS THE PROPERTY OF ROHN. IT IS NOT TO BE REPRODUCED, COPIED OR TRACED IN WHOLE OR IN PART WITHOUT OUR WRITTEN CONSENT.

TOWER PROFILE
GROUTING & DRAINAGE DETAIL

DWN:	O.H	CHK'D:	WDU	DATE:	Mar/03/1972
ENG'R:	TWS				
DRAWING NO:	SK720305			REV:	8

Aug/29/2006 11:57:47 AM

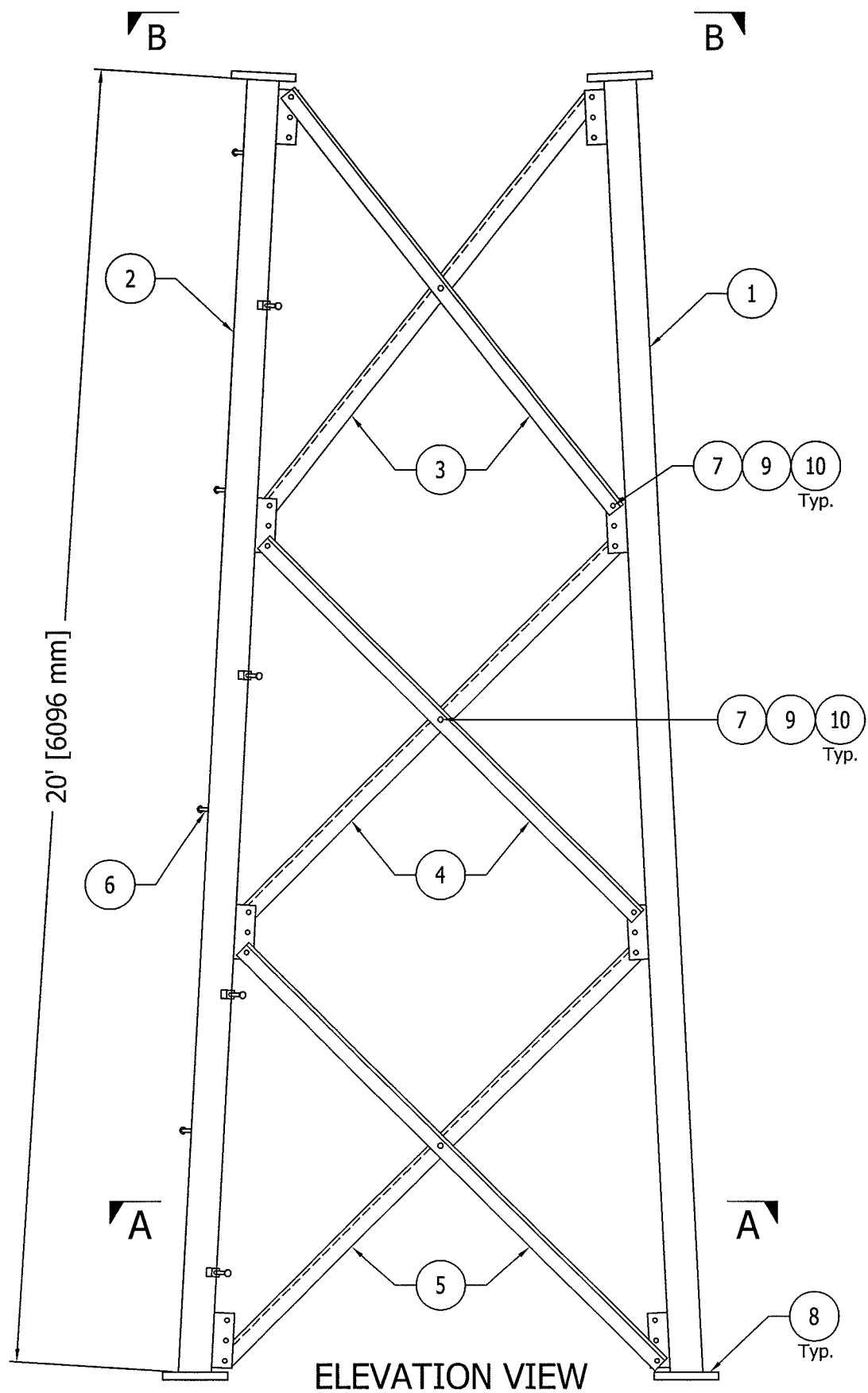
Erection

REV.	DESCRIPTION	DWN	CHK	APP

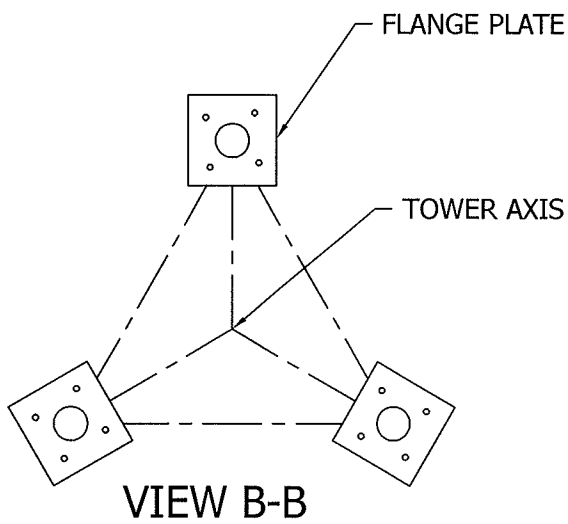
ITEM	PART NO.	QTY.	DESCRIPTION	
1	R-VL5906	2	LEG SSV 9-11N 2.5STD 20' 5 6OFF S9	[PIPE 64mm STD]
2	R-VL5906S	1	LEG SSV 9-11N 2.5STD 20' 5 6OFF S9	[PIPE 64mm STD]
3	R-N101	6	BRACE DS SS10T L2X.13X12.29'	[L 51x51x3]
4	R-N102	6	BRACE DS SS10T L2X.13X12.86'	[L 51x51x3]
5	R-N103	6	BRACE DS SS10T L2X.13X13.35'	[L 51x51x3]
6	R-5/8STEP	16	BOLT ASSY STEP 5/8X7 W/DBN	[M16x178]
7	R-210017G	45	BOLT 1/2x1-1/4 HSB A325 FT HDG	[M12x32]
8	110162	12	Nut 3/4 (Jam -Pal) HDG	[M19]
9	110160	45	Nut 1/2 (Jam - Pal) HDG	[M12]
10	110143	45	HEX NUT 1/2 (13 UNC) 2H GAL	[M12]

GENERAL NOTES:

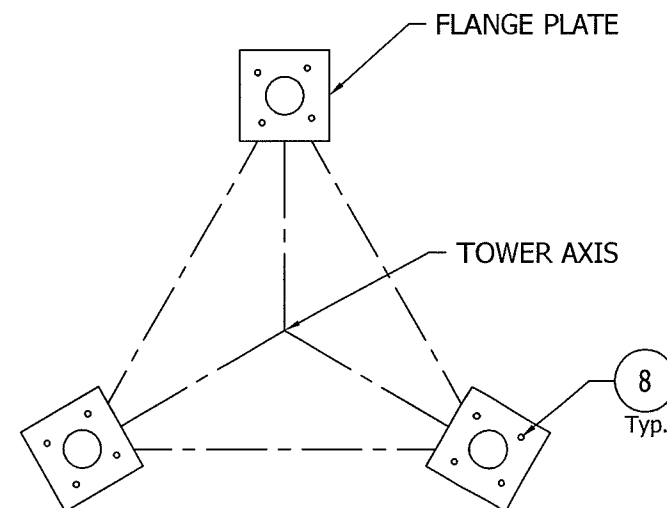
1. LEG PART NUMBER IS STAMPED AT THE BOTTOM OF EACH LEG AND MUST BE LOCATED AT THE BOTTOM OF THE SECTION FOR PROPER ASSEMBLY.
2. STEP BOLTS ARE PROVIDED ON ONE LEG ONLY.
3. THIS SECTION IS A BASE SECTION. SEE THE TOWER ASSEMBLY FOR ANCHOR BOLTS. PAL NUTS ARE SUPPLIED FOR THE ANCHOR BOLTS.
4. DRAWING IS N.T.S. AND IS FOR ASSEMBLY PURPOSES ONLY.



ELEVATION VIEW



VIEW B-B



SECTION A-A

FLANGE	OFFSET	BEVEL	FLANGE PLATE (P/N)	SPREAD
TOP	N/A	N/A	5"x5"x3/4" (R-5C)	10'- 6 3/4" [3219mm]
BOTTOM	1/4" [6mm]	3 1/3" STD	6"x6"x3/4" (R-6A)	12'- 7 1/4" [3842mm]

DWG REFERENCE



6718 WEST PLANK ROAD
PEORIA, IL 61604
TOLL FREE 800-727-ROHN

THIS DRAWING IS THE PROPERTY OF ROHN. IT IS NOT TO BE REPRODUCED, COPIED OR TRACED IN WHOLE OR IN PART WITHOUT OUR WRITTEN CONSENT.

**SECTION ASSEMBLY
DETAILS FOR SSV 10N387**

DWN: J.K	CHK'D: JDM	DATE: Aug/22/2007
----------	------------	-------------------

ENG'R: HA	
-----------	--

DRAWING NO: A070498	REV: 0
---------------------	--------

FILE NO. Standard-SSV				
REVISIONS				
REV.	DESCRIPTION	DWN	CHK	APP
2	REDRAW DATE: Apr/12/2006	KB2	JDM	JPG
3	REDRAWN TO STANDARDS DATE: Jul/14/2010	LGC	KTL	DWG

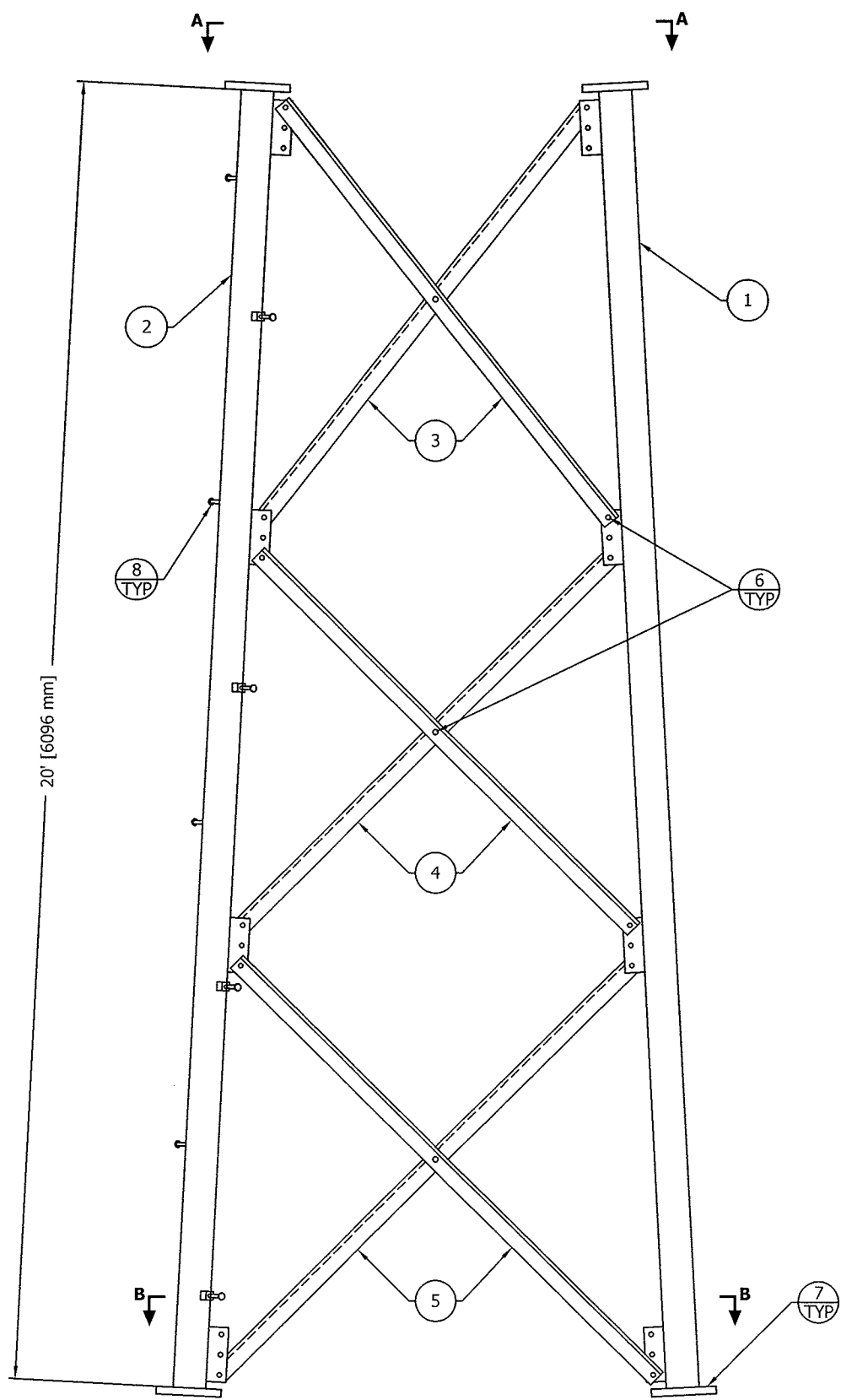
SECTION ASSEMBLY P/N: 9N

BILL OF MATERIAL

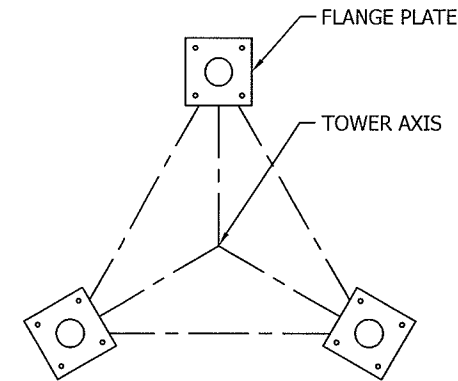
ITEM	PART NO.	QTY	DESCRIPTION	
1	VL358	2	LEG SSV 9-11N 2.5STD 20'5 5 S9	[PIPE 64mm STD]
2	VL358S	1	LEG SSV 9-11N 2.5STD 20'5 5 S9	[PIPE 64mm STD]
3	N91	6	BRACE DS SS9T L1.75X.13X10.63'	[L 44x44x3]
4	N92	6	BRACE DS SS9T L1.75X.13X11.17'	[L 44x44x3]
5	N93	6	BRACE DS SS9T L1.75X.13X11.61'	[L 44x44x3]
6	210017GA	45	BOLT ASSY 1/2 X 1-1/4 HSB A325	[M13x32]
7	210033GA	12	BOLT ASSY 5/8 X 2-1/2 HSB A325	[M16x64]
8	5/8STEP	16	BOLT ASSY STEP 5/8X7 W/DBN	[M16x178]

GENERAL NOTES:

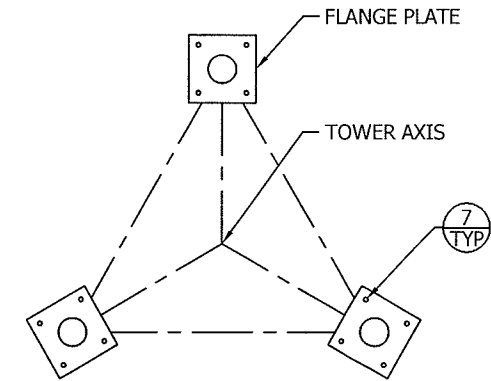
- LEG PART NUMBER IS STAMPED AT THE BOTTOM OF EACH LEG AND MUST BE LOCATED AT THE BOTTOM OF THE SECTION FOR PROPER ASSEMBLY.
- STEP BOLTS ARE PROVIDED ON ONE LEG ONLY.
- FLANGE BOLTS ARE FOR FLANGE PLATES AT THE BOTTOM OF THE SECTION.
- DRAWING IS N.T.S. AND IS FOR ASSEMBLY PURPOSES ONLY.
- NOMINAL METRIC EQUIVALENTS ARE GIVEN FOR REFERENCE ONLY AND SHALL NOT BE SUBSTITUTED FOR THE DESCRIBED SIZES UNLESS OTHERWISE APPROVED BY ROHN PRODUCTS.



ELEVATION VIEW



VIEW A-A



SECTION B-B

FLANGE	OFFSET	BEVEL	FLANGE PLATE (P/N)	SPREAD
TOP	N/A	N/A	5" X 5" X 3/4" (P/N: R-5C)	8'-6 3/4" [2610mm]
BOTTOM	N/A	N/A	5" X 5" X 3/4" (P/N: R-5C)	10'-6 3/4" [3219mm]

DWG REFERENCE



6718 WEST PLANK ROAD
PEORIA, IL 61604
TOLL FREE 800-727-ROHN

THIS DRAWING IS THE PROPERTY OF ROHN. IT IS NOT TO BE REPRODUCED, COPIED OR TRACED IN WHOLE OR IN PART WITHOUT OUR WRITTEN CONSENT.

**SECTION ASSEMBLY
DETAILS FOR SSV 9N**

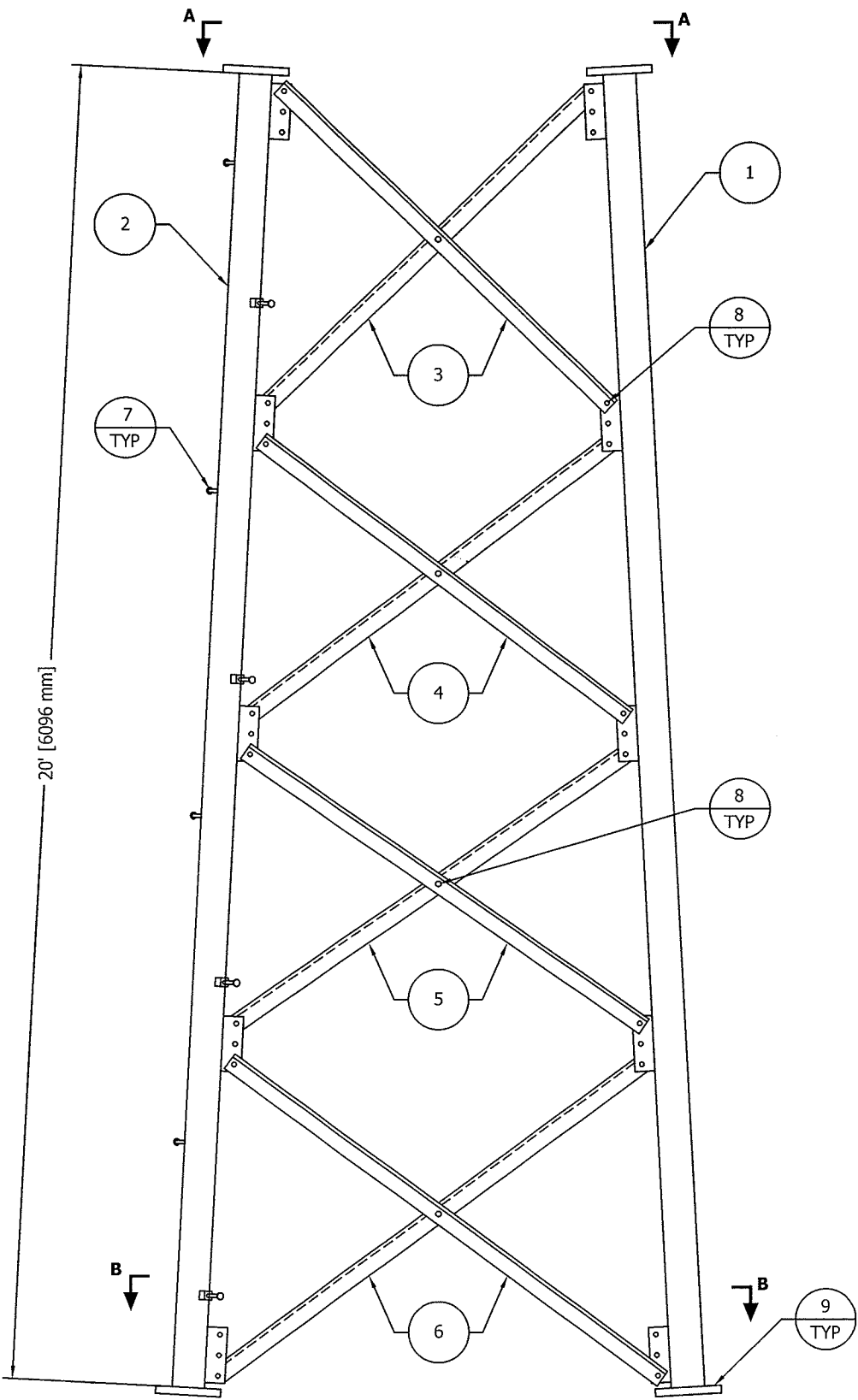
DWN: AED CHK'D: WDU DATE: Nov/11/1978

ENG'R: TWS

DRAWING NO: A780316 REV: 3

Jul/15/2010 4:24:35 PM

Creation



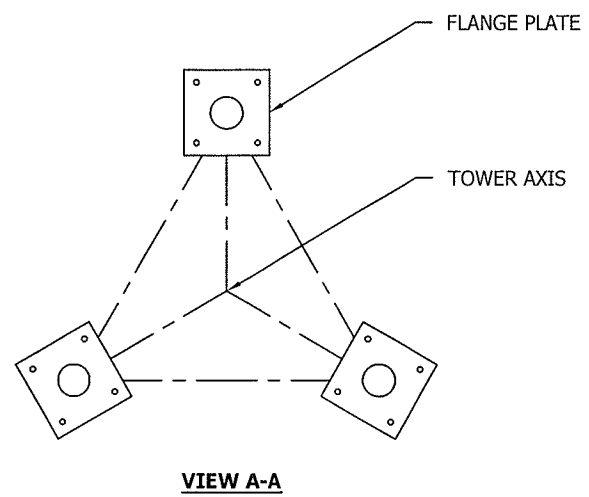
ELEVATION VIEW

FLANGE	OFFSET	BEVEL	FLANGE PLATE (P/N)	SPREAD
TOP	N/A	N/A	5" x 5" x 3/4" (R-5C)	6'- 6 3/4" [2000mm]
BOTTOM	N/A	N/A	5" x 5" x 3/4" (R-5C)	8'- 6 3/4" [2610mm]

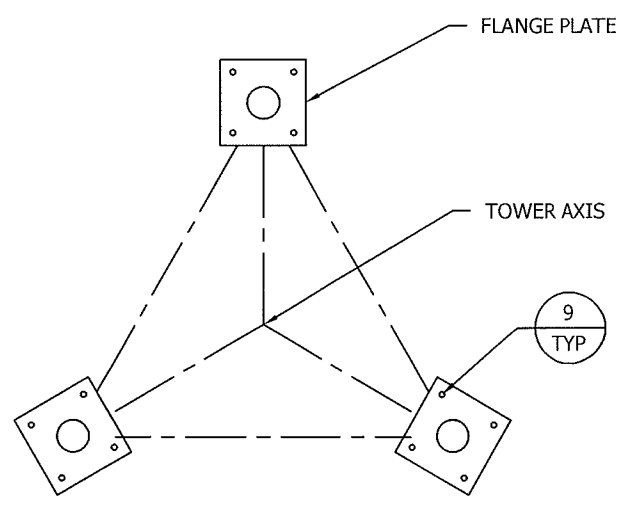
BILL OF MATERIALS				
ITEM	PART NO.	QTY	DESCRIPTION	
1	VL349	2	LEG SSV 8N 2.5STD 20' 5 5	[PIPE 64mm STD]
2	VL349S	1	LEG SSV 8N 2.5STD 20' 5 5	[PIPE 64mm STD]
3	N81	6	BRACE DS SS8T L1.5X.13X7.95'	[L 38x38x3]
4	N82	6	BRACE DS SS8T L1.5X.13X8.36'	[L 38x38x3]
5	N83	6	BRACE DS SS8T L1.5X.13X8.79'	[L 38x38x3]
6	N84	6	BRACE DS SS8T L1.5X.13X9.11'	[L 38x38x3]
7	5/8STEP	16	BOLT ASSY STEP 5/8X7 W/DBN	[M16x178]
8	210017GA	60	BOLT ASSY 1/2 X 1-1/4 HSB A325	[M13x32]
9	210033GA	12	BOLT ASSY 5/8 X 2-1/2 HSB A325	[M16X64]

GENERAL NOTES:

1. LEG PART NUMBER IS STAMPED AT THE BOTTOM OF EACH LEG AND MUST BE LOCATED AT THE BOTTOM OF THE SECTION FOR PROPER ASSEMBLY.
2. STEP BOLTS ARE PROVIDED ON ONE LEG ONLY.
3. FLANGE BOLTS ARE FOR FLANGE PLATES AT THE BOTTOM OF THE SECTION.
4. DRAWING IS N.T.S. AND IS FOR ASSEMBLY PURPOSES ONLY.
5. NOMINAL METRIC EQUIVALENTS ARE GIVEN FOR REFERENCE ONLY AND SHALL NOT BE SUBSTITUTED FOR THE DESCRIBED SIZES UNLESS OTHERWISE APPROVED BY ROHN PRODUCTS.



VIEW A-A



SECTION B-B

FILE NO. Standard-SSV				
REVISIONS				
REV.	DESCRIPTION	DWN	CHK	APP
1	REDRAWN NEW AUTOCAD FORMAT DATE: Dec/21/2005	KB2	JDM	H.A
2	UPDATED TO STANDARDS DATE: May/05/2010	CHW	KTL	HA
DWG REFERENCE				
<p>6718 WEST PLANK ROAD PEORIA, IL 61604 TOLL FREE 800-727-ROHN</p>				
THIS DRAWING IS THE PROPERTY OF ROHN. IT IS NOT TO BE REPRODUCED, COPIED OR TRACED IN WHOLE OR IN PART WITHOUT OUR WRITTEN CONSENT.				
SECTION ASSEMBLY DETAILS FOR SSV 8N				
DWN:	AED	CHK'D:	MDI	DATE: Oct/28/1978
ENGR:	TWS			
DRAWING NO: A780252				REV: 2

May/10/2010 11:14:32 AM

Revision 1

REVISIONS				
REV.	DESCRIPTION	DWN	CHK	APP
1	REDRAWN NEW AUTOCAD FORMAT	KB2	JDM	H.A
DATE: Apr/18/2006				
2	UPDATED TO NEW STANDARDS	M.F	KTL	HA
DATE: Jun/15/2010				

DWG REFERENCE

ROHN
PRODUCTS

6718 WEST PLANK ROAD
PEORIA, IL 61604
TOLL FREE 800-727-ROHN

THIS DRAWING IS THE PROPERTY OF ROHN. IT IS NOT TO BE REPRODUCED, COPIED OR TRACED IN WHOLE OR IN PART WITHOUT OUR WRITTEN CONSENT.

**SECTION ASSEMBLY
DETAILS FOR SSV 7N**

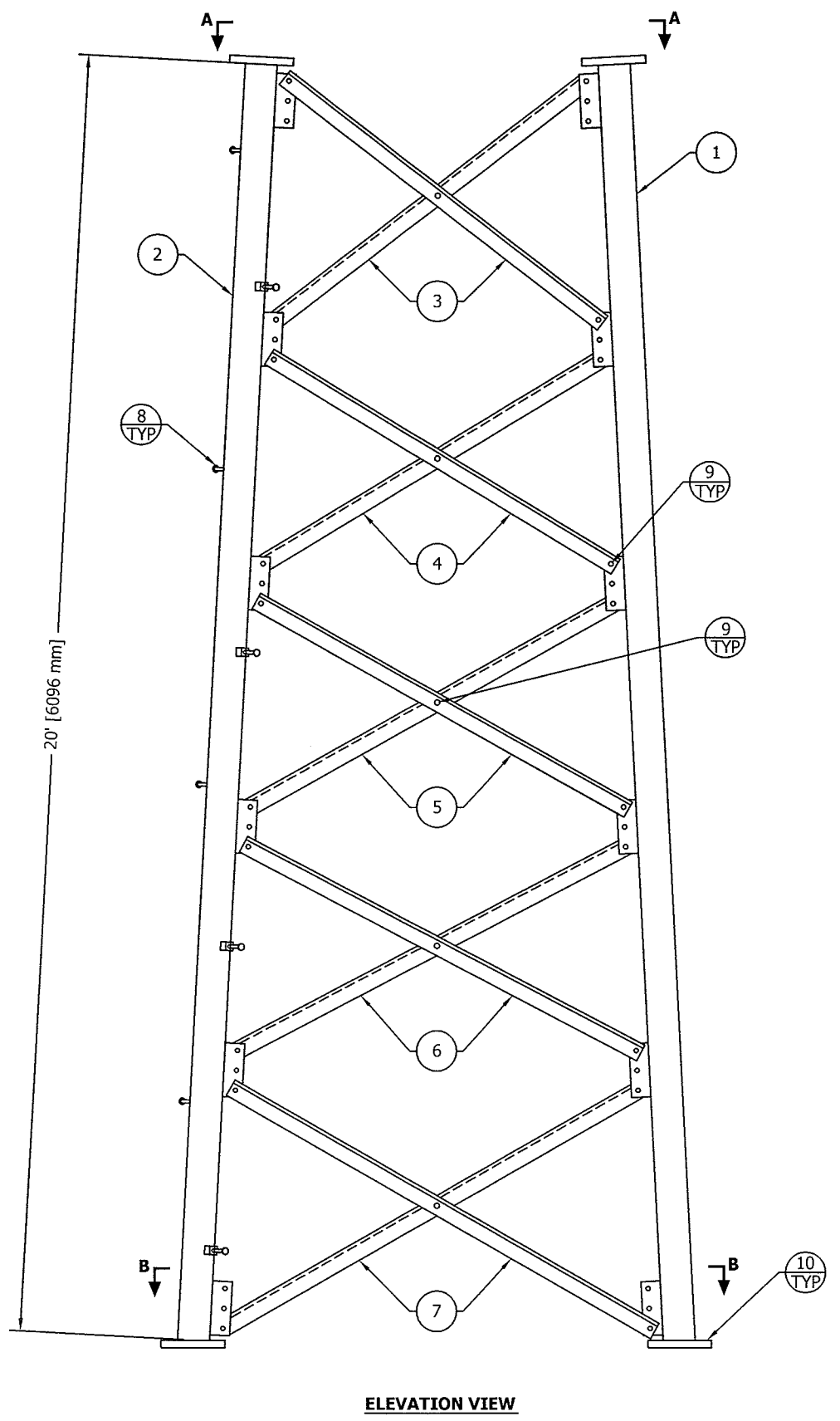
DWN: AED CHK'D: MWD DATE: Sep/09/1978

ENGR: T.S

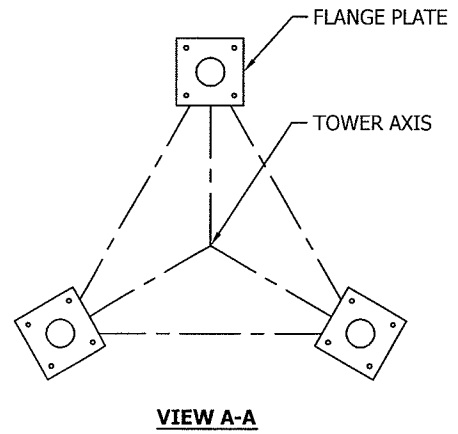
DRAWING NO: A780139 REV: 2

ASSEMBLY P/N: 7N				
BILL OF MATERIALS				
ITEM	PART NO.	QTY	DESCRIPTION	
1	VL348	2	LEG SSV 6-7N 2STD 20' 5 5OFF	[PIPE 51mm STD]
2	VL348S	1	LEG SSV 6-7N 2STD 20' 5 5OFF	[PIPE 51mm STD]
3	N71	6	BRACE DS SS7T L1.5X.13X5.71'	[L 38x38x3]
4	N72	6	BRACE DS SS7T L1.5X.13X6.03'	[L 38x38x3]
5	N73	6	BRACE DS SS7T L1.5X.13X6.35'	[L 38x38x3]
6	N74	6	BRACE DS SS7T L1.5X.13X6.69'	[L 38x38x3]
7	N75	6	BRACE DS SS7T L1.5X.13X6.92'	[L 38x38x3]
8	5/8STEP	16	BOLT ASSY STEP 5/8X7 W/DBN	[M16x178]
9	210017GA	75	BOLT ASSY 1/2 X 1-1/4 HSB A325	[M13x32]
10	210033GA	12	BOLT ASSY 5/8 X 2-1/2 HSB A325	[M16x64]

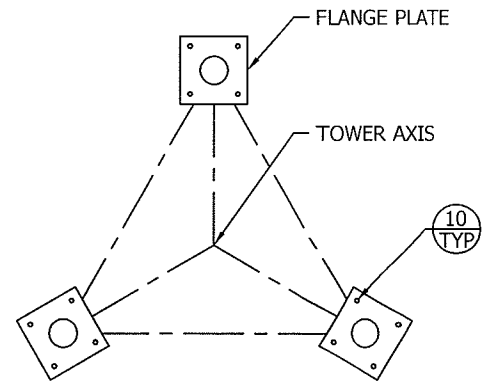
- GENERAL NOTES:**
- LEG PART NUMBER IS STAMPED AT THE BOTTOM OF EACH LEG AND MUST BE LOCATED AT THE BOTTOM OF THE SECTION FOR PROPER ASSEMBLY.
 - STEP BOLTS ARE PROVIDED ON ONE LEG ONLY.
 - FLANGE BOLTS ARE FOR FLANGE PLATES AT THE BOTTOM OF THE SECTION.
 - DRAWING IS N.T.S. AND IS FOR ASSEMBLY PURPOSES ONLY.
 - NOMINAL METRIC EQUIVALENTS ARE GIVEN FOR REFERENCE ONLY AND SHALL NOT BE SUBSTITUTED FOR THE DESCRIBED SIZES UNLESS OTHERWISE APPROVED BY ROHN PRODUCTS.



ELEVATION VIEW



VIEW A-A



SECTION B-B

FLANGE	OFFSET	BEVEL	FLANGE PLATE (P/N)	SPREAD
TOP	N/A	N/A	5" X 5" X 3/4" (P/N: R-5A)	4'-6 1/4" [1378mm]
BOTTOM	1/4" [6mm]	N/A	5" X 5" X 3/4" (P/N: R-5B)	6'-6 3/4" [2000mm]

Jun/21/2010 2:42:00 PM

Iteration

FILE NO. Standard-SSV				
REVISIONS				
REV.	DESCRIPTION	DWN	CHK	APP
3	REDRAWN BY KINBY. DATE: Nov/10/2005	KB3	JDM	HA
4	UPDATED TOP FLANGE BEVEL. DATE: Mar/28/2008	ABS	KTL	HA
5	UPDATED TO STANDARDS DATE: Jun/18/2010	CHW	KTL	HA

DWG REFERENCE

ROHN
PRODUCTS LLC
PO BOX 5999
PEORIA, IL 61601-5999
TOLL FREE 800-727-ROHN

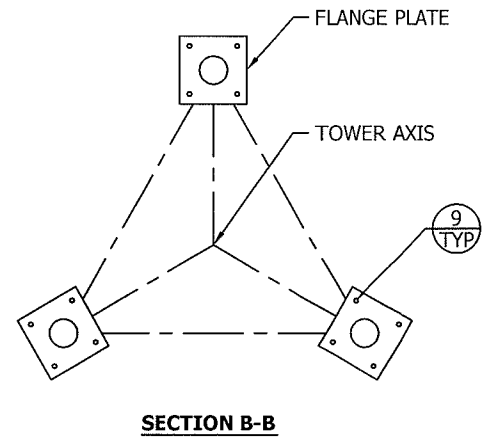
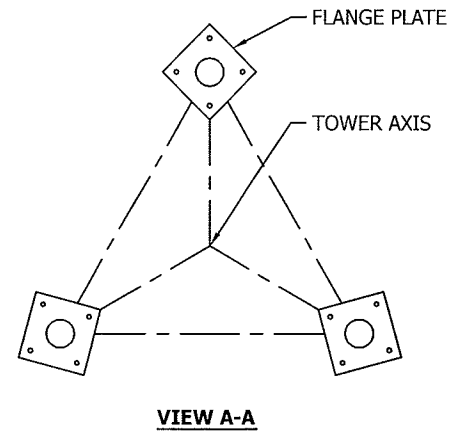
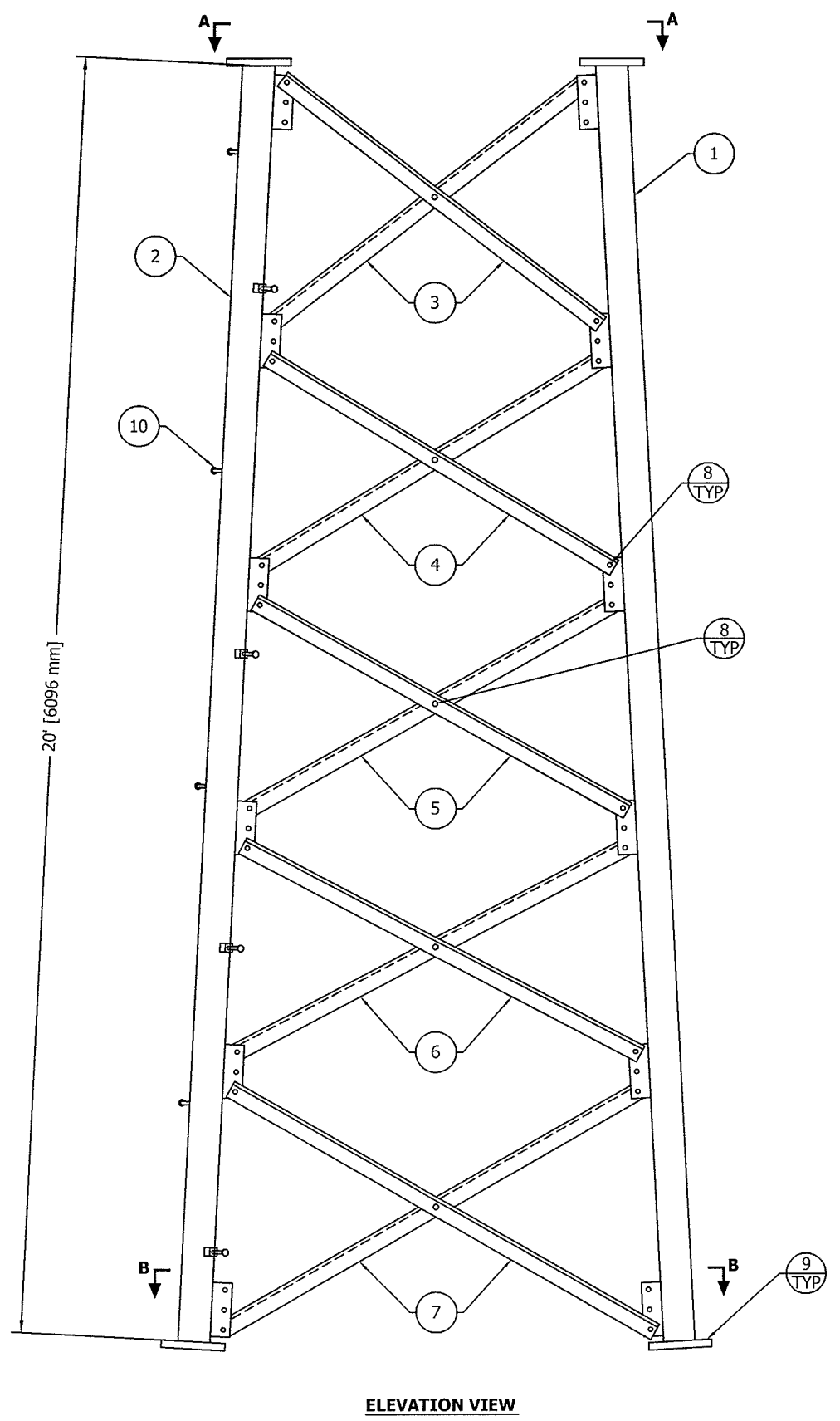
THIS DRAWING IS THE PROPERTY OF ROHN. IT IS NOT TO BE REPRODUCED, COPIED OR TRACED IN WHOLE OR IN PART WITHOUT OUR WRITTEN CONSENT.

**SECTION ASSEMBLY
DETAILS FOR SSV 6N**

DWN: AED	CHK'D: WDU	DATE: Oct/18/1978
ENGR: TWS		
DRAWING NO: A780200		REV: 5

ASSEMBLY P/N: 6N				
BILL OF MATERIALS				
ITEM	PART NO.	QTY	DESCRIPTION	
1	VL347	2	LEG SSV 6N 2STD 20' 45BEV 5	[PIPE 51mm STD]
2	VL347S	1	LEG SSV 6N 2STD 20' 45BEV 5	[PIPE 51mm STD]
3	N61	6	BRACE DS SS6T L1.5X.13X4.39'	[L 38x38x3]
4	N62	6	BRACE DS SS6T L1.5X.13X4.61'	[L 38x38x3]
5	N63	6	BRACE DS SS6T L1.5X.13X4.86'	[L 38x38x3]
6	N64	6	BRACE DS SS6T L1.5X.13X5.14'	[L 38x38x3]
7	N65	6	BRACE DS SS6T L1.5X.13X5.28'	[L 38x38x3]
8	210017GA	75	BOLT ASSY 1/2 X 1-1/4 HSB A325	[M13x32]
9	210033GA	12	BOLT ASSY 5/8 X 2-1/2 HSB A325	[M16x64]
10	5/8STEP	16	BOLT ASSY STEP 5/8X7 W/DBN	[M16x178]

- GENERAL NOTES:**
- LEG PART NUMBER IS STAMPED AT THE BOTTOM OF EACH LEG AND MUST BE LOCATED AT THE BOTTOM OF THE SECTION FOR PROPER ASSEMBLY.
 - STEP BOLTS ARE PROVIDED ON ONE LEG ONLY.
 - FLANGE BOLTS ARE FOR FLANGE PLATES AT THE BOTTOM OF THE SECTION.
 - DRAWING IS N.T.S. AND IS FOR ASSEMBLY PURPOSES ONLY.
 - NOMINAL METRIC EQUIVALENTS ARE GIVEN FOR REFERENCE ONLY AND SHALL NOT BE SUBSTITUTED FOR THE DESCRIBED SIZES UNLESS OTHERWISE APPROVED BY ROHN PRODUCTS.



FLANGE	OFFSET	BEVEL	FLANGE PLATE (P/N)	SPREAD
TOP	N/A	3 1/3° REV	4 1/2" X 4 1/2" X 5/8" (P/N: R-VL906)	2'-6" [762mm]
BOTTOM	N/A	N/A	5" X 5" X 3/4" (P/N: R-5A)	4'-6 1/4" [1378mm]

Jun/08/2010 4:21:39 PM

Erection

FILE NO. Standard-SSV

REVISIONS				
REV.	DESCRIPTION	DWN	CHK	APP
3	REDRAWN NEW AUTOCAD FORMAT	KB3	JDM	HA
DATE: Dec/24/2005				
4	UPDATED TO STANDARDS	ABS	KTL	HA
DATE: Jun/10/2010				

DWG REFERENCE	

ROHN
PRODUCTS

6718 WEST PLANK ROAD
PEORIA, IL 61604
TOLL FREE 800-727-ROHN

THIS DRAWING IS THE PROPERTY OF ROHN. IT IS NOT TO BE REPRODUCED, COPIED OR TRACED IN WHOLE OR IN PART WITHOUT OUR WRITTEN CONSENT.

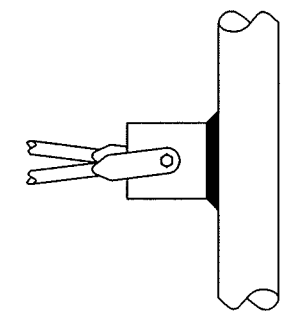
SECTION ASSEMBLY
SECTION 5N

DWN:	AED	CHK'D:	J_D	DATE:	Mar/22/1979	
ENGR:	TWS					
DRAWING NO:	A790119				REV:	4

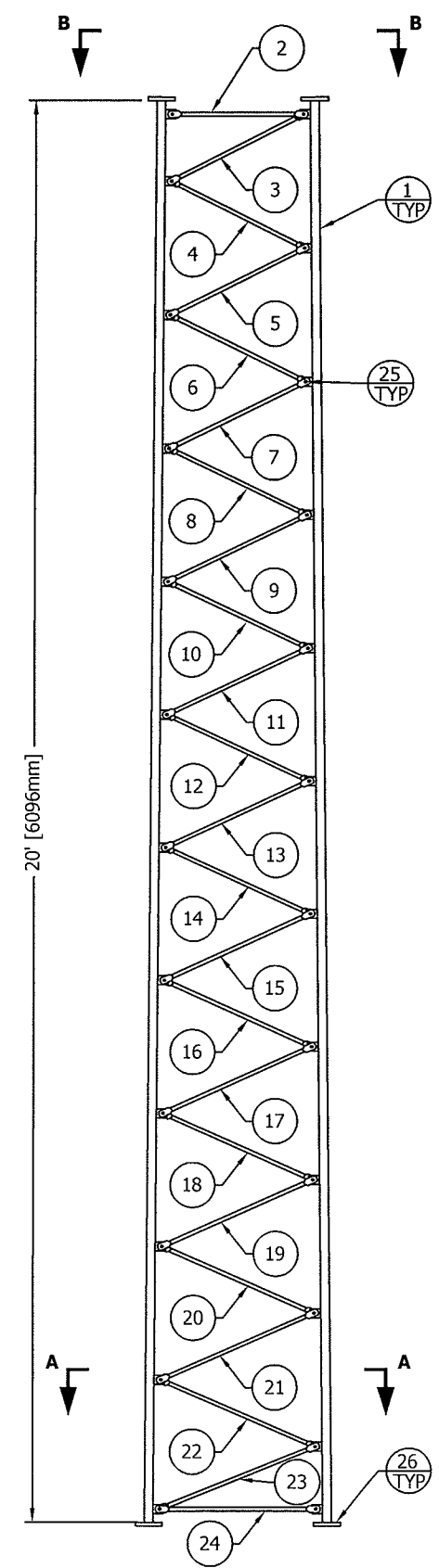
BILL OF MATERIALS

ITEM	PART NO.	QTY	DESCRIPTION	
1	VL341	3	LEG SSV 5N/5NST 1.44SR 20' 45	[BAR RND 37mm SR]
2	N45	3	BRACE DIAG SSV RD BAR .63X1.98	[BAR RND 16mm]
3	N51	3	BRACE DIAG SSV RD BAR .63X2.18	[BAR RND 16mm]
4	N52	3	BRACE DIAG SSV RD BAR .63X2.22	[BAR RND 16mm]
5	N53	3	BRACE DIAG SSV RD BAR .63X2.23	[BAR RND 16mm]
6	N54	3	BRACE DIAG SSV RD BAR .63X2.25	[BAR RND 16mm]
7	N55	3	BRACE DIAG SSV RD BAR .63X2.26	[BAR RND 16mm]
8	N56	3	BRACE DIAG SSV RD BAR .63X2.28	[BAR RND 16mm]
9	N57	3	BRACE DIAG SSV RD BAR .63X2.29	[BAR RND 16mm]
10	N58	3	BRACE DIAG SSV RD BAR .63X2.30	[BAR RND 16mm]
11	N59	3	BRACE DIAG SSV RD BAR .63X2.31	[BAR RND 16mm]
12	N510	3	BRACE DIAG SSV RD BAR .63X2.33	[BAR RND 16mm]
13	N511	3	BRACE DIAG SSV RD BAR .63X2.34	[BAR RND 16mm]
14	N512	3	BRACE DIAG SSV RD BAR .63X2.36	[BAR RND 16mm]
15	N513	3	BRACE DIAG SSV RD BAR .63X2.38	[BAR RND 16mm]
16	N514	3	BRACE DIAG SSV RD BAR .63X2.39	[BAR RND 16mm]
17	N515	3	BRACE DIAG SSV RD BAR .63X2.40	[BAR RND 16mm]
18	N516	3	BRACE DIAG SSV RD BAR .63X2.42	[BAR RND 16mm]
19	N517	3	BRACE DIAG SSV RD BAR .63X2.43	[BAR RND 16mm]
20	N518	3	BRACE DIAG SSV RD BAR .63X2.45	[BAR RND 16mm]
21	N519	3	BRACE DIAG SSV RD BAR .63X2.46	[BAR RND 16mm]
22	N520	3	BRACE DIAG SSV RD BAR .63X2.47	[BAR RND 16mm]
23	N521	3	BRACE DIAG SSV RD BAR .63X2.49	[BAR RND 16mm]
24	N58	3	BRACE DIAG SSV RD BAR .63X2.30	[BAR RND 16mm]
25	210008GA	72	BOLT ASSY 3/8 X 1-1/2 HCS G5	[M10x38]
26	210032GA	12	BOLT ASSY 5/8 X 2-1/4 HSB A325	[M16x57]

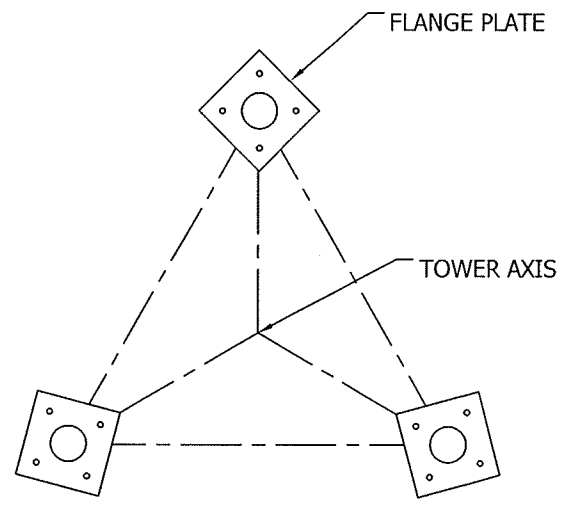
- GENERAL NOTES:**
1. LEG PART NUMBER IS STAMPED AT THE BOTTOM OF EACH LEG AND MUST BE LOCATED AT THE BOTTOM OF THE SECTION FOR PROPER ASSEMBLY.
 2. FLANGE BOLTS ARE FOR FLANGE PLATES AT THE BOTTOM OF THE SECTION.
 3. DRAWING IS N.T.S. AND IS FOR ASSEMBLY PURPOSES ONLY.
 4. NOMINAL METRIC EQUIVALENTS ARE GIVEN FOR REFERENCE ONLY AND SHALL NOT BE SUBSTITUTED FOR THE DESCRIBED SIZES UNLESS OTHERWISE APPROVED BY ROHN PRODUCTS.



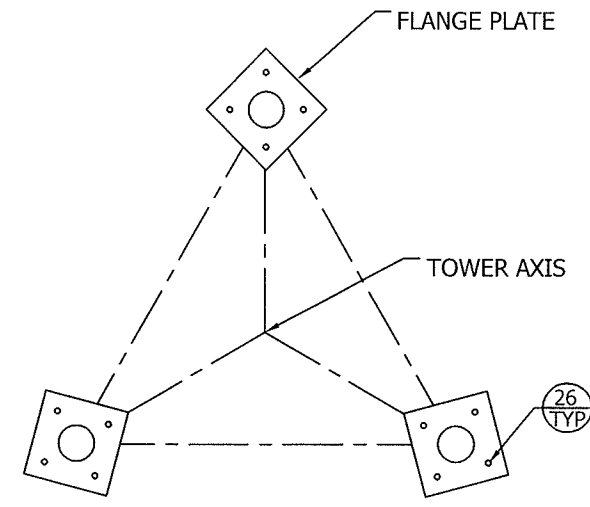
BRACING DETAIL



ELEVATION VIEW



VIEW B-B

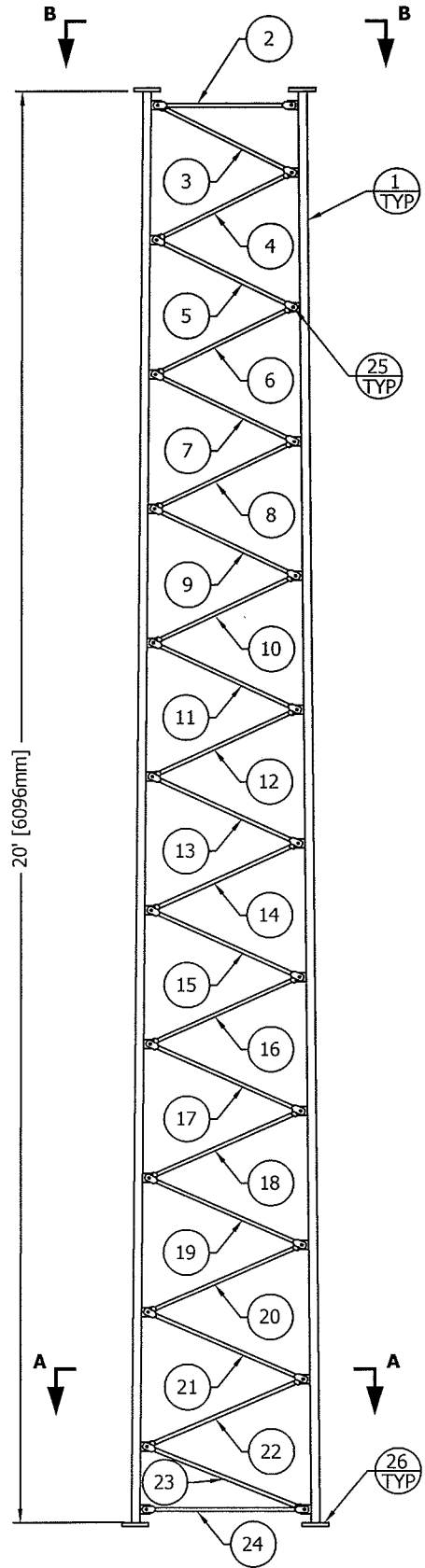


SECTION A-A

FLANGE	OFFSET	BEVEL	FLANGE PLATE (P/N)	SPREAD
TOP	N/A	N/A	4.5x4.5x5/8" (R-VL901)	2'-2" [660mm]
BOTTOM	N/A	N/A	4.5x4.5x5/8" (R-VL901)	2'-6" [762mm]

Jun/25/2010 8:45:20 AM

1/creation

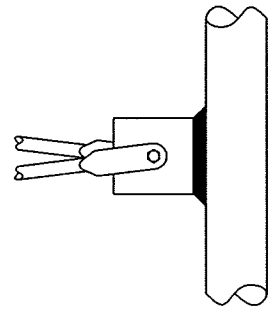


ELEVATION VIEW

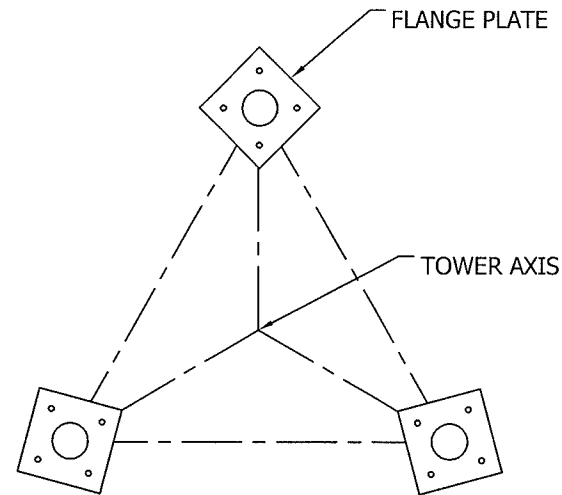
FLANGE	OFFSET	BEVEL	FLANGE PLATE (P/N)	SPREAD
TOP	N/A	N/A	4x4x1/2" (R-4A)	1'-10" [559mm]
BOTTOM	N/A	N/A	4.5x4.5x5/8" (R-45A)	2'-2" [660mm]

GENERAL NOTES:

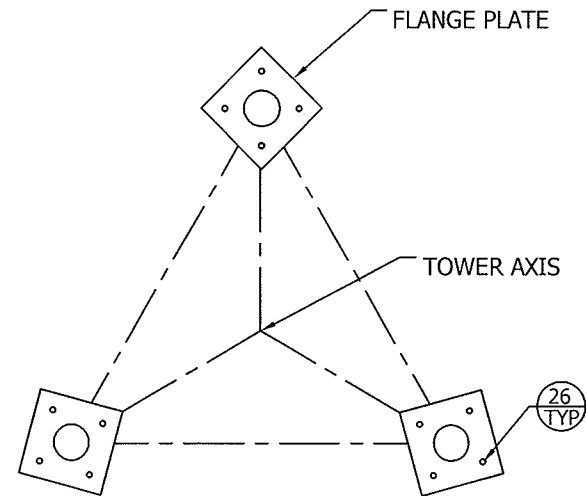
1. LEG PART NUMBER IS STAMPED AT THE BOTTOM OF EACH LEG AND MUST BE LOCATED AT THE BOTTOM OF THE SECTION FOR PROPER ASSEMBLY.
2. FLANGE BOLTS ARE FOR FLANGE PLATES AT THE BOTTOM OF THE SECTION.
3. DRAWING IS N.T.S. AND IS FOR ASSEMBLY PURPOSES ONLY.
4. NOMINAL METRIC EQUIVALENTS ARE GIVEN FOR REFERENCE ONLY AND SHALL NOT BE SUBSTITUTED FOR THE DESCRIBED SIZES UNLESS OTHERWISE APPROVED BY ROHN PRODUCTS.



BRACING DETAIL



VIEW B-B



SECTION A-A

BILL OF MATERIALS				
ITEM	PART NO.	QTY	DESCRIPTION	
1	VL345	3	LEG SSV 4N 1.25SR 20' 4 45	[BAR RND 32mm SR]
2	N4T	3	BRACE H SSV RD BAR .63X1.66'	[BAR RND 16mm]
3	N41	3	BRACE DIAG SSV RD BAR .63X1.90	[BAR RND 16mm]
4	N42	3	BRACE DIAG SSV RD BAR .63X1.94	[BAR RND 16mm]
5	N43	3	BRACE DIAG SSV RD BAR .63X1.95	[BAR RND 16mm]
6	N44	3	BRACE DIAG SSV RD BAR .63X1.97	[BAR RND 16mm]
7	N45	3	BRACE DIAG SSV RD BAR .63X1.98	[BAR RND 16mm]
8	N46	3	BRACE DIAG SSV RD BAR .63X1.99	[BAR RND 16mm]
9	N47	3	BRACE DIAG SSV RD BAR .63X2.01	[BAR RND 16mm]
10	N48	3	BRACE DIAG SSV RD BAR .63X2.02	[BAR RND 16mm]
11	N49	3	BRACE DIAG SSV RD BAR .63X2.04	[BAR RND 16mm]
12	N410	3	BRACE DIAG SSV RD BAR .63X2.05	[BAR RND 16mm]
13	N411	3	BRACE DIAG SSV RD BAR .63X2.06	[BAR RND 16mm]
14	N412	3	BRACE DIAG SSV RD BAR .63X2.08	[BAR RND 16mm]
15	N413	3	BRACE DIAG SSV RD BAR .63X2.09	[BAR RND 16mm]
16	N414	3	BRACE DIAG SSV RD BAR .63X2.10	[BAR RND 16mm]
17	N415	3	BRACE DIAG SSV RD BAR .63X2.12	[BAR RND 16mm]
18	N416	3	BRACE DIAG SSV RD BAR .63X2.13	[BAR RND 16mm]
19	N417	3	BRACE DIAG SSV RD BAR .63X2.15	[BAR RND 16mm]
20	N418	3	BRACE DIAG SSV RD BAR .63X2.16	[BAR RND 16mm]
21	N419	3	BRACE DIAG SSV RD BAR .63X2.17	[BAR RND 16mm]
22	N420	3	BRACE DIAG SSV RD BAR .63X2.19	[BAR RND 16mm]
23	N421	3	BRACE DIAG SSV RD BAR .63X2.20	[BAR RND 16mm]
24	N4B	3	BRACE H SSV RD BAR .63X1.99'	[BAR RND 16mm]
25	210008GA	72	BOLT ASSY 3/8 X 1-1/2 HCS G5	[M10x38]
26	210032GA	12	BOLT ASSY 5/8 X 2-1/4 HSB A325	[M16x57]

FILE NO. Standard-SSV				
REVISIONS				
REV.	DESCRIPTION	DWN	CHK	APP
2	REDRAWN NEW AUTOCAD FORMAT	KB2	JDM	HA
DATE: Dec/24/2005				
3	UPDATED TO STANDARDS	CHW	KTL	HA
DATE: Jun/18/2010				
DWG REFERENCE				

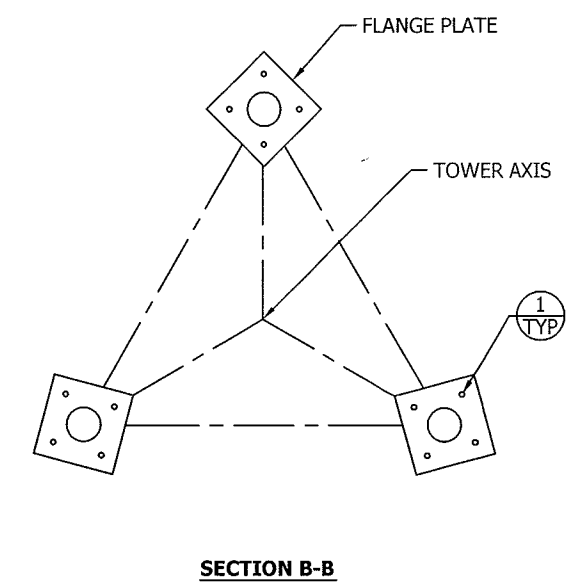
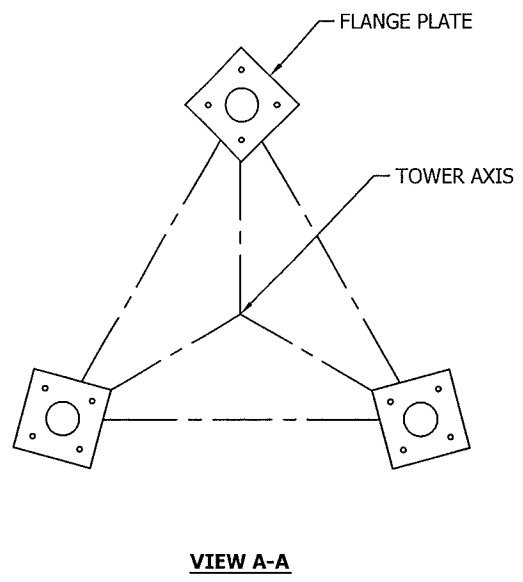
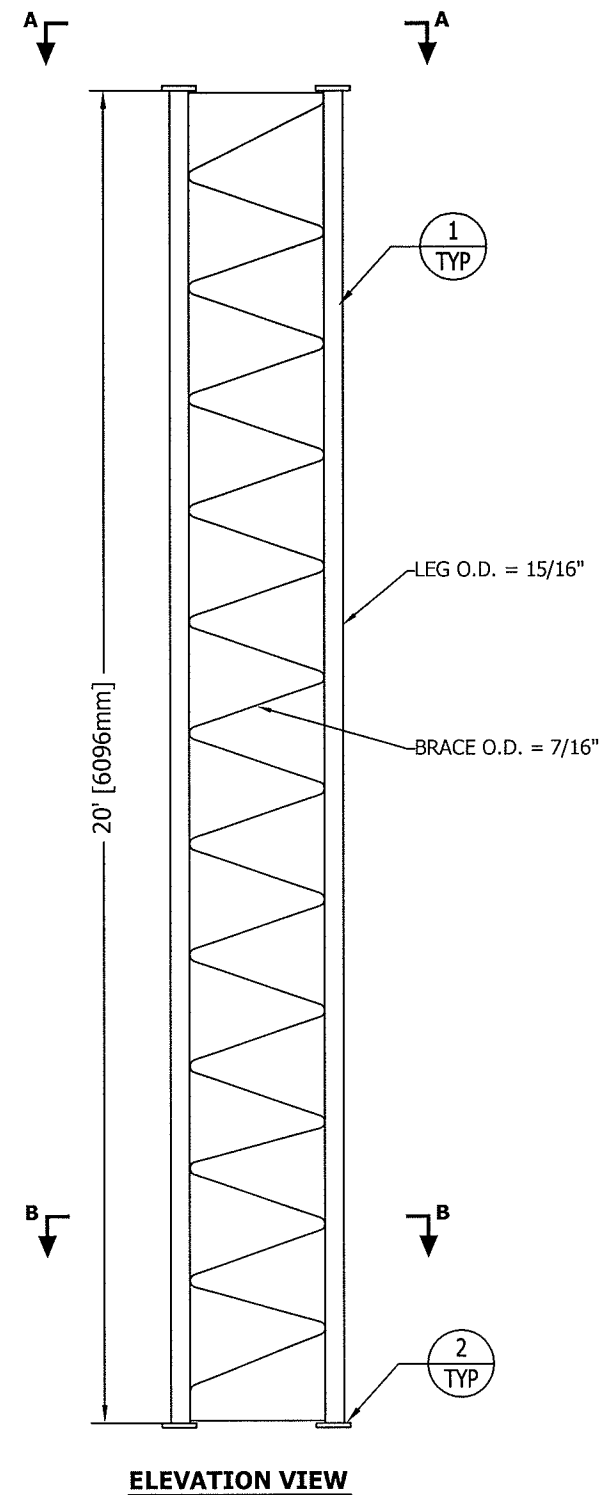
<p>PO BOX 5999 PEORIA, IL 61601-5999 TOLL FREE 800-727-ROHN</p>				
<small>THIS DRAWING IS THE PROPERTY OF ROHN. IT IS NOT TO BE REPRODUCED, COPIED OR TRACED IN WHOLE OR IN PART WITHOUT OUR WRITTEN CONSENT.</small>				
SECTION ASSEMBLY SECTION 4N				
DWN:	AED	CHK'D:	RAM	DATE:
ENG'R:	TWS			Mar/17/1979
DRAWING NO:				REV:
A790110				3

Jul/09/2010 3:03:32 PM

Ireacion

Jul08/2010 3:04:19 PM

1/revision



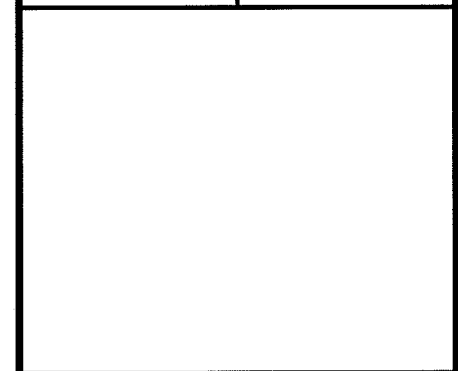
FLANGE	OFFSET	BEVEL	FLANGE PLATE (P/N)	SPREAD
TOP	N/A	1/2° REV	3x3x3/8" (R-3A)	1'-6" [457mm]
BOTTOM	N/A	1/2° STD	4x4x1/2" (R-4A)	1'-10" [559mm]

ASSEMBLY P/N: 3WN				
BILL OF MATERIALS				
ITEM	PART NO.	QTY	DESCRIPTION	
1	VS3	3	SECTION 20' 3WN WELDED	
2	210020GA	12	BOLT ASSY 1/2 X 2 HSB A325	[M13x51]

- GENERAL NOTES:**
- LEG PART NUMBER IS STAMPED AT THE BOTTOM OF EACH LEG AND MUST BE LOCATED AT THE BOTTOM OF THE SECTION FOR PROPER ASSEMBLY.
 - FLANGE BOLTS ARE FOR FLANGE PLATES AT THE BOTTOM OF THE SECTION.
 - DRAWING IS N.T.S. AND IS FOR ASSEMBLY PURPOSES ONLY.
 - NOMINAL METRIC EQUIVALENTS ARE GIVEN FOR REFERENCE ONLY AND SHALL NOT BE SUBSTITUTED FOR THE DESCRIBED SIZES UNLESS OTHERWISE APPROVED BY ROHN PRODUCTS.

FILE NO.	Standard-SSV			
REVISIONS				
REV.	DESCRIPTION	DWN	CHK	APP
5	ADD BRACE AND LEG O.D. DIMENSIONS	JEC	JDM	HA
DATE: 06/20/11				

DWG REFERENCE



ROHN
PRODUCTS LLC

PO BOX 5999
PEORIA, IL 61601-5999
TOLL FREE 800-727-ROHN

THIS DRAWING IS THE PROPERTY OF ROHN. IT IS NOT TO BE REPRODUCED, COPIED OR TRACED IN WHOLE OR IN PART WITHOUT OUR WRITTEN CONSENT.

**SECTION ASSEMBLY
3WN**

DWN:	CHK'D:	DATE:
AED	RAM	Mar/14/1979
ENG'R:	TWS	
DRAWING NO:	REV:	
A790097	5	

FILE NO. Standard-SSV				
REVISIONS				
REV.	DESCRIPTION	DWN	CHK	APP
5	ADD BRACE AND LEG O.D. DIMENSIONS	JEC	JDM	HA
DATE: 06/20/11				

ASSEMBLY P/N: 2W				
BILL OF MATERIAL				
ITEM	QTY	PART NO.	DESCRIPTION	
1	12	210008GA	BOLT ASSY 3/8 X 1-1/2 HCS G5	[M10x38]
2	1	VS2	SECTION 20' 2WB WELDED HDG	

- GENERAL NOTES:**
- LEG PART NUMBER IS STAMPED AT THE BOTTOM OF EACH LEG AND MUST BE LOCATED AT THE BOTTOM OF THE SECTION FOR PROPER ASSEMBLY.
 - FLANGE BOLTS ARE FOR FLANGE PLATES AT THE BOTTOM OF THE SECTION.
 - DRAWING IS N.T.S. AND IS FOR ASSEMBLY PURPOSES ONLY.

DWG REFERENCE

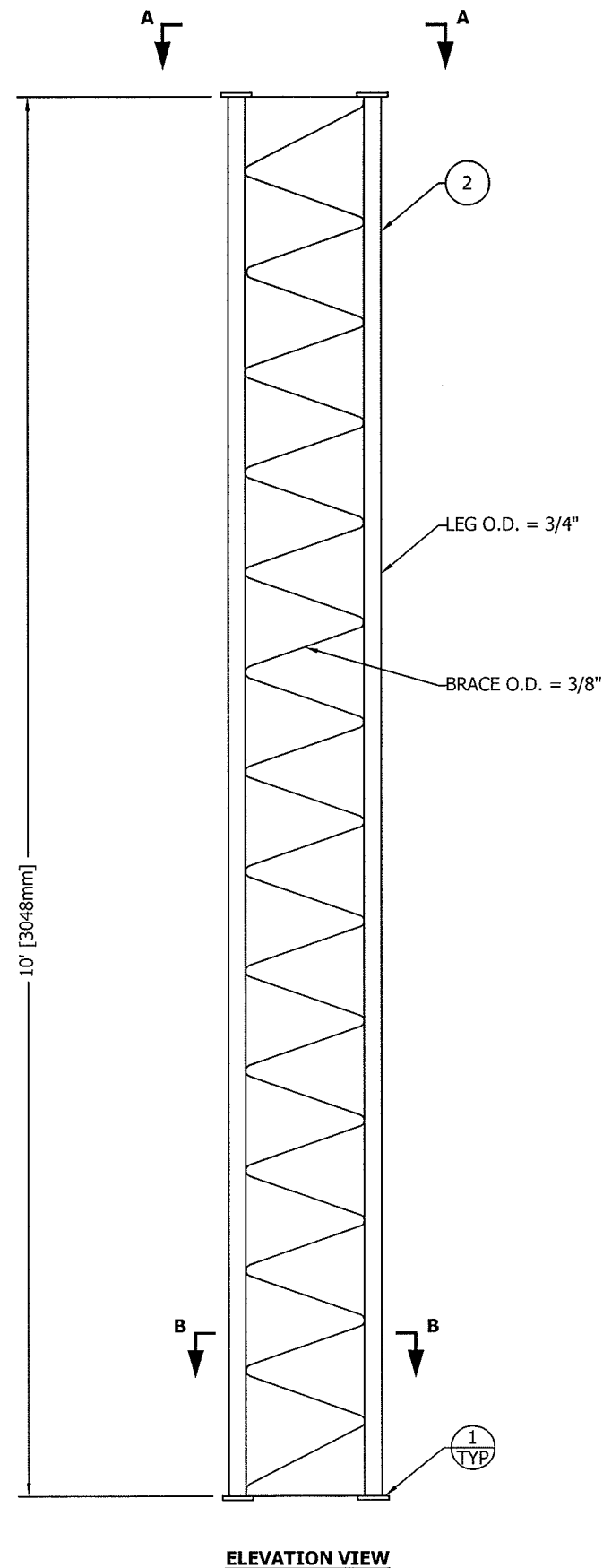
ROHN
PRODUCTS

6718 WEST PLANK ROAD
PEORIA, IL 61604
TOLL FREE 800-727-ROHN

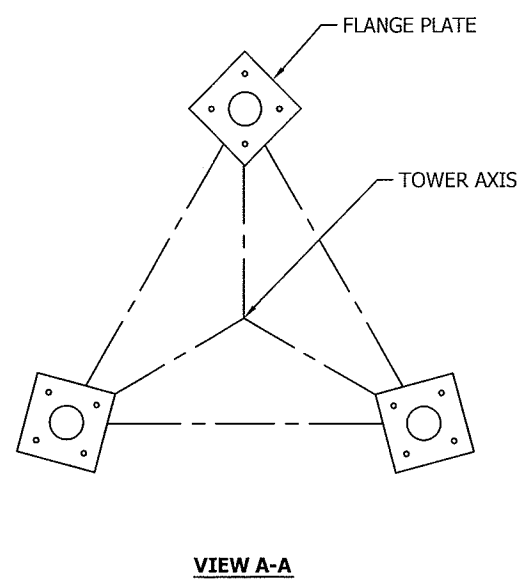
THIS DRAWING IS THE PROPERTY OF ROHN. IT IS NOT TO BE REPRODUCED, COPIED OR TRACED IN WHOLE OR IN PART WITHOUT OUR WRITTEN CONSENT.

**SECTION ASSEMBLY
SECTION 2W**

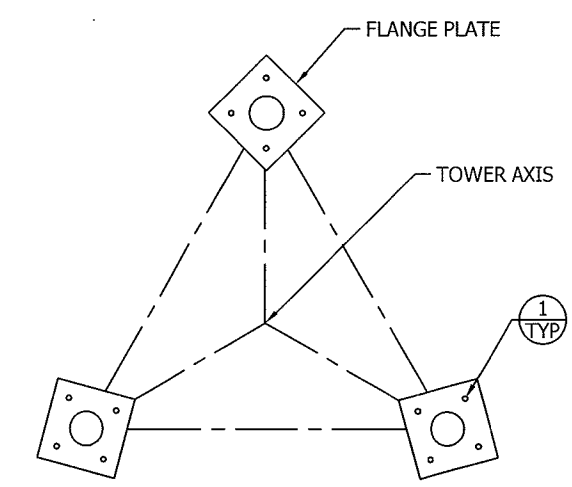
DWN: AED	CHK'D: RAM	DATE: Mar/14/1979
ENGR: TWS		
DRAWING NO: A790091		REV: 5



ELEVATION VIEW



VIEW A-A



SECTION B-B

FLANGE	OFFSET	BEVEL	FLANGE PLATE (P/N)	SPREAD
TOP	N/A	1/2° REV	3" X 3" X 3/8" (R-3A)	1'-2" [356mm]
BOTTOM	N/A	1/2° STD	3" X 3" X 3/8" (R-3A)	1'-6" [457mm]

Mar/02/2011 3:46:09 PM

Reaction

ASSEMBLY P/N: 1WB				
BILL OF MATERIAL				
ITEM	QTY	PART NO.	DESCRIPTION	
1	12	210008GA	BOLT ASSY 3/8 X 1-1/2 HCS G5	[M10x38]
2	1	VS6	SECTION 10' 1WB WELDED	

REVISIONS				
REV.	DESCRIPTION	DWN	CHK	APP
1	REDRAWN INTO AUTOCAD FORMAT DATE: Dec/18/2007	KB3	M.F	HA
2	REVISED TO STANDARDS DATE: Feb/26/2011	M.F	JDM	H.A

- GENERAL NOTES:**
- LEG PART NUMBER IS STAMPED AT THE BOTTOM OF EACH LEG AND MUST BE LOCATED AT THE BOTTOM OF THE SECTION FOR PROPER ASSEMBLY.
 - FLANGE BOLTS ARE FOR FLANGE PLATES AT THE BOTTOM OF THE SECTION.
 - DRAWING IS N.T.S. AND IS FOR ASSEMBLY PURPOSES ONLY.

DWG REFERENCE

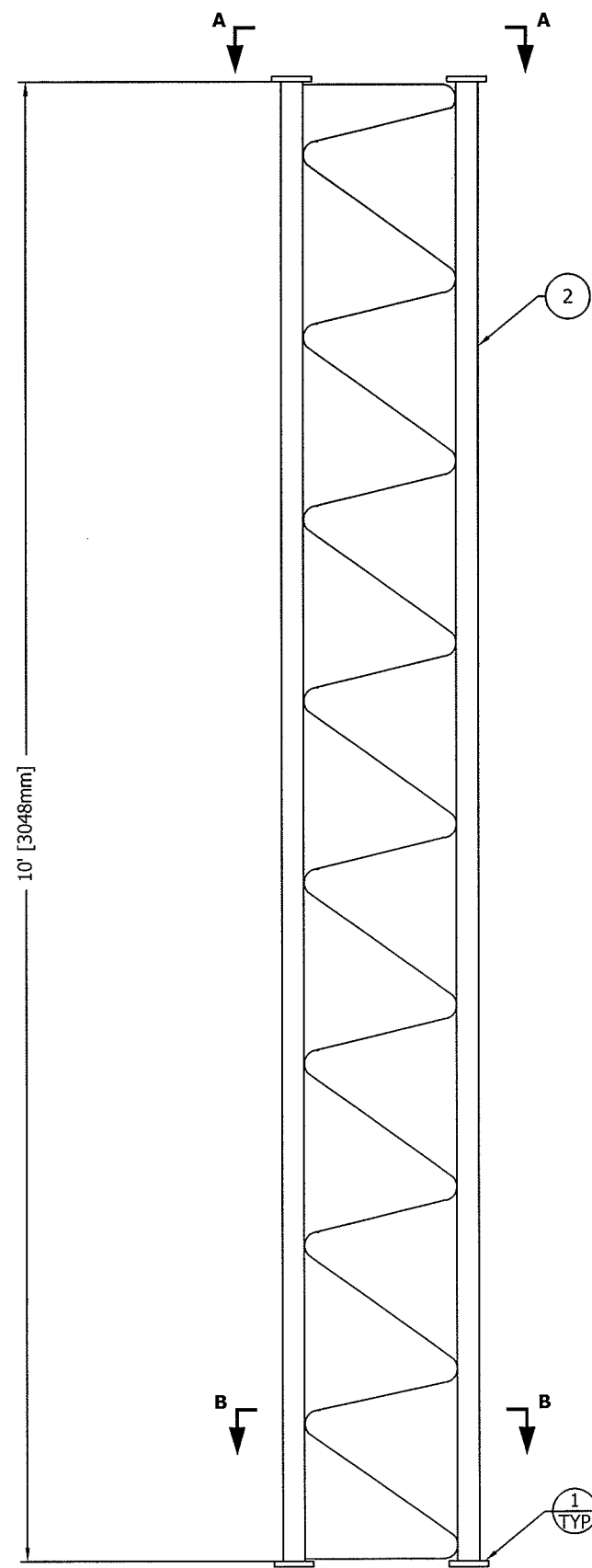
ROHN
PRODUCTS

6718 WEST PLANK ROAD
PEORIA, IL 61604
TOLL FREE 800-727-ROHN

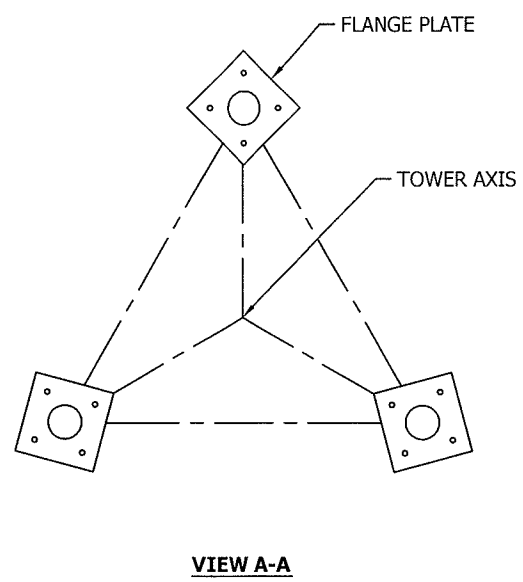
THIS DRAWING IS THE PROPERTY OF ROHN. IT IS NOT TO BE REPRODUCED, COPIED OR TRACED IN WHOLE OR IN PART WITHOUT OUR WRITTEN CONSENT.

**SECTION ASSEMBLY
DETAILS FOR SSV 1WB**

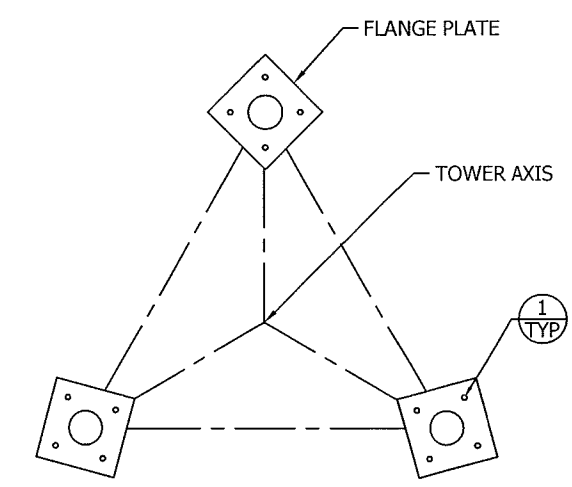
DWN: AED	CHK'D: RDM	DATE: Mar/14/1979
ENGR: TWS		
DRAWING NO: A790089		REV: 2



ELEVATION VIEW



VIEW A-A

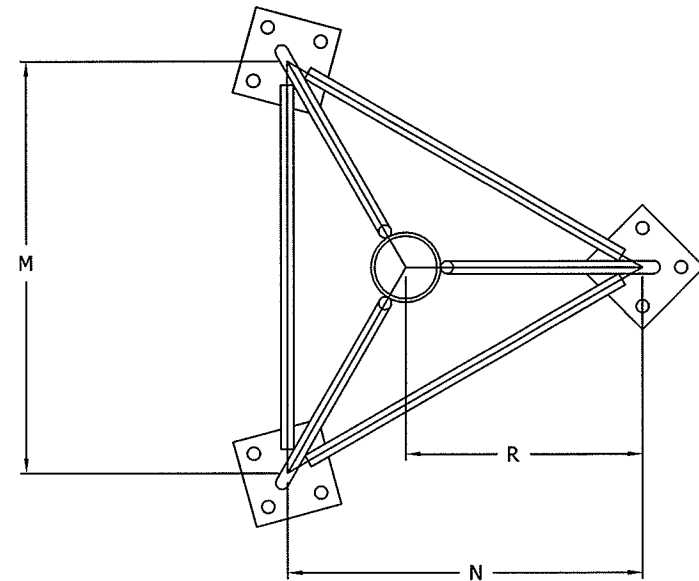


SECTION B-B

FLANGE	OFFSET	BEVEL	FLANGE PLATE (P/N)	SPREAD
TOP	N/A	N/A	3" X 3" X 3/8" (R-3A)	1'-2" [356mm]
BOTTOM	N/A	3 1/3° STD.	3" X 3" X 3/8" (R-3A)	1'-2" [356mm]

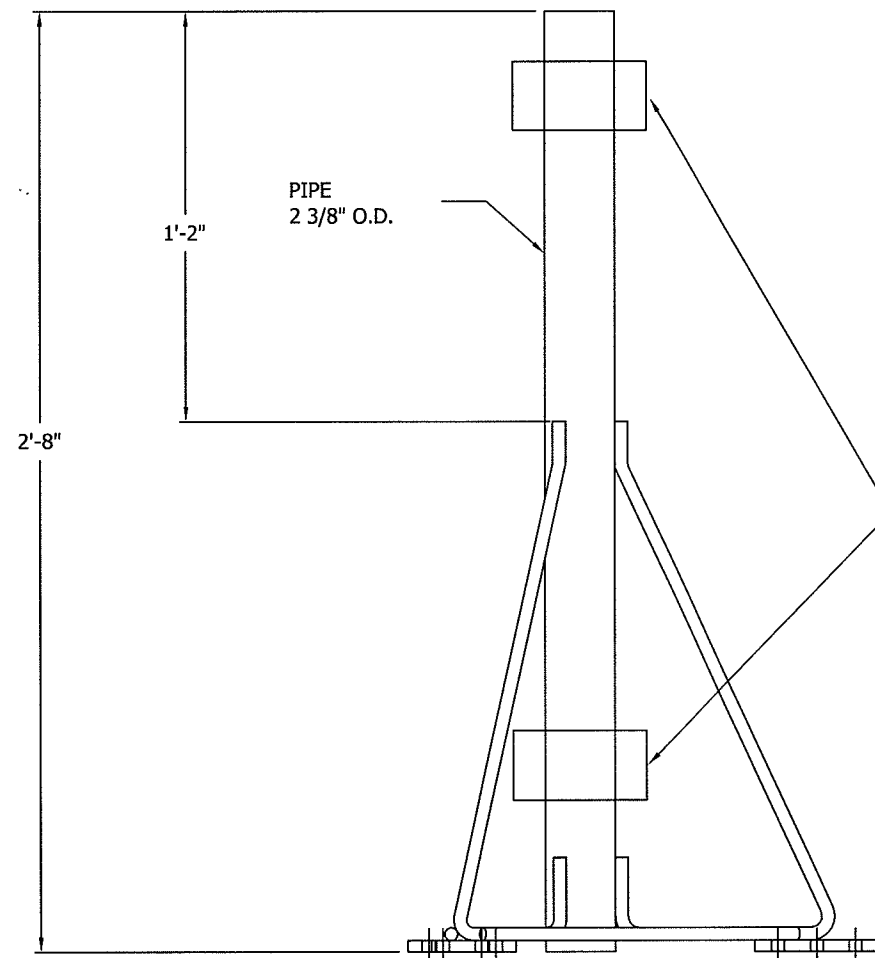
Mar/02/2011 3:46:44 PM

1/section1



TAPERED TOP ASSY BILL OF MATERIALS DETAIL								
ASSY P/N	TOWER SEC.	M	N	R	FLANGE PLATE	FLANGE BOLTS		
	NUMBER				SIZE	QTY	SIZE	P/N
1TT	1W, 1WB, 2W	1'-2"	1'-0 1/8"	0'-8 1/16"	3 X 3 X 3/8	9	3/8 X 1-1/2	210008GA
3TT	2WST, 2WB, 3WN	1'-6"	1'-3 9/16"	0'-10 3/8"	3 X 3 X 3/8	9	3/8 X 1-1/2	210008GA
4TTN	3WNST, 3WNB, 4N	1'-10"	1'-7 1/16"	1'-0 11/16"	4 X 4 X 1/2	9	1/2 X 2	210020GA
5TTN	4NST, 4NA, 4WB, 4NC, 5N	2'-2"	1'-10 1/2"	1'-3"	4-1/2 X 4-1/2 X 5/8	9	5/8 X 2-1/4	210032GA
6TT	5NST, 5NA, 5NB, 5NC, 6N	2'-6"	2'-2"	1'-5 5/16"	4-1/2 X 4-1/2 X 5/8	9	5/8 X 2-1/4	210032GA

NOTE: DESIGN BASED ON THRUST OF 500# AT CLAMPING POSITIONS



RECOMMENDED CLAMPING POSITIONS FOR ANTENNA MOUNTS

FILE NO.

REVISIONS				
REV.	DESCRIPTION	DWN	CHK	APP
12	UPDATED TO NEW STANDARDS	JEC	KTL	DWG
DATE: 07/29/11				

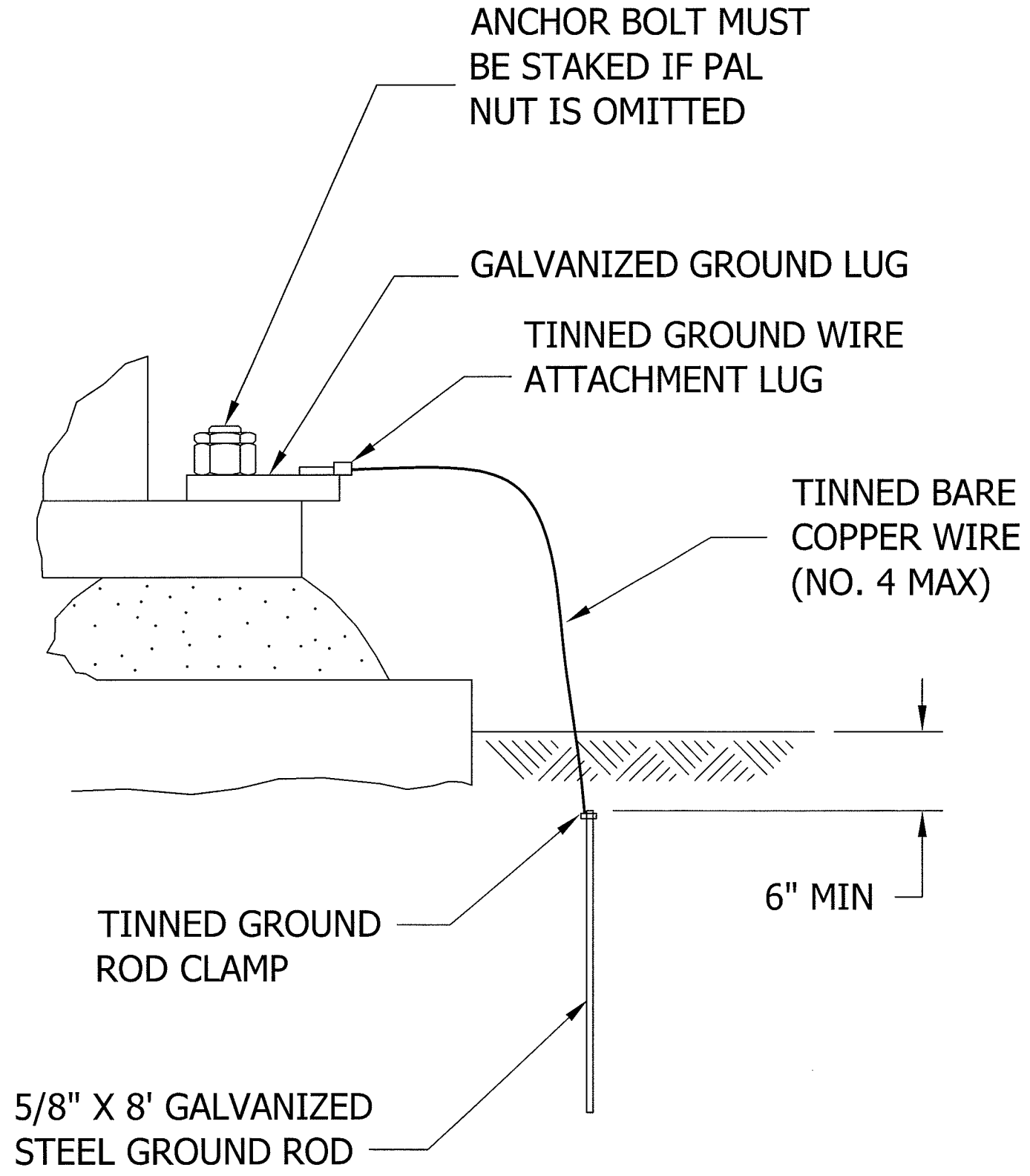
ROHN
PRODUCTS

PO BOX 5999
PEORIA, IL 61601-5999
TOLL FREE 800-727-ROHN

THIS DRAWING IS THE PROPERTY OF ROHN. IT IS NOT TO BE REPRODUCED, COPIED OR TRACED IN WHOLE OR IN PART WITHOUT OUR WRITTEN CONSENT.

TAPERED TOP ASSEMBLY

DWN:	MDI	CHK'D:	OH	DATE:	JAN/03/1967
ENG'R:	CW	SHEET #:	1 OF 1		
DRAWING NO:	SK670407			REV:	12



FILE NO. Standard-SSV

REVISIONS				
REV.	DESCRIPTION	DWN	CHK	APP
1	UPDATED DATE: Aug/22/2005	JDM	HA	HA
2	UPDATED GROUND ROD & NOTES DATE: Oct/26/2007	M.F	KTL	HA

DWG REFERENCE

ROHN
PRODUCTS

6718 WEST PLANK ROAD
PEORIA, IL 61604
TOLL FREE 800-727-ROHN

THIS DRAWING IS THE PROPERTY OF ROHN. IT IS NOT TO BE REPRODUCED, COPIED OR TRACED IN WHOLE OR IN PART WITHOUT OUR WRITTEN CONSENT.

**GROUNDING
BASE DETAIL FOR SELF SUPPORT TOWERS**

DWN: JDM	CHK'D: B_F	DATE: Jun/04/2002
ENGR: TWS		
DRAWING NO: C020349	REV: 2	

06/29/2007 1:03:33 PM

Erection\